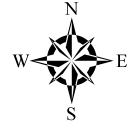
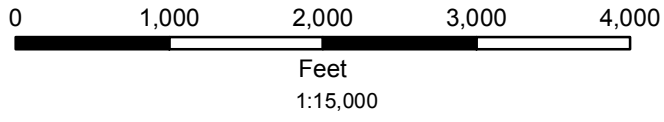


Tate Lohr Wildlife Management Area

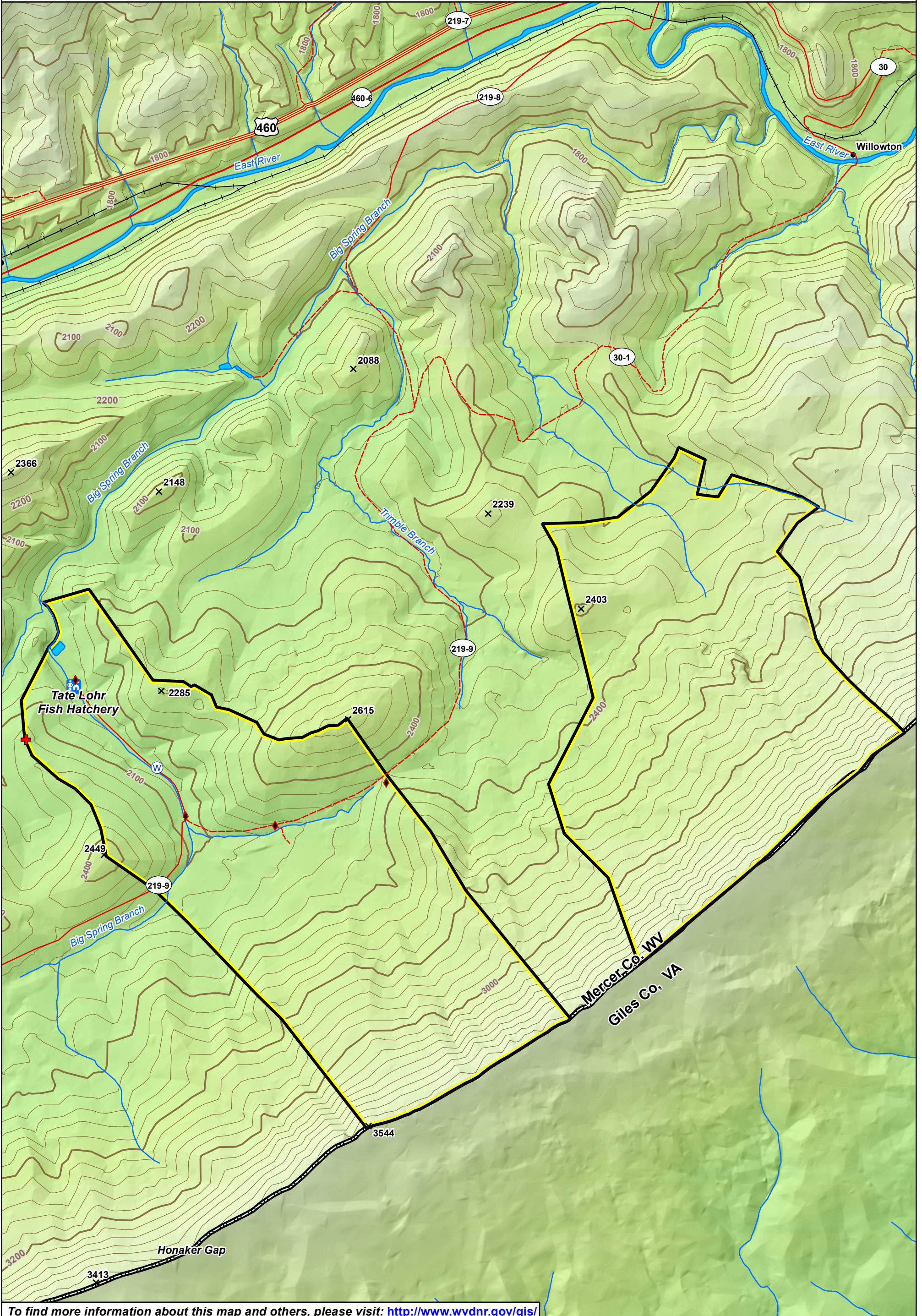
Mercer County, West Virginia

Contour Interval 40 Feet
Bold Line at Even 200 Feet
Boundaries are Approximate

- ◆ Gate
- ✚ Cemetery
- Ⓜ Spring
- 🏠 Office
- 🐾 Wildlife Clearing
- 📐 WMA Property Boundary



Prepared by
WV Division of Natural Resources
Wildlife Resources Section, GIS
Elkins, WV 26241
January 15, 2019



To find more information about this map and others, please visit: <http://www.wvdnr.gov/gis/>