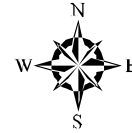
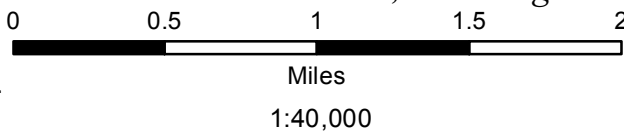


Hughes River Wildlife Management Area

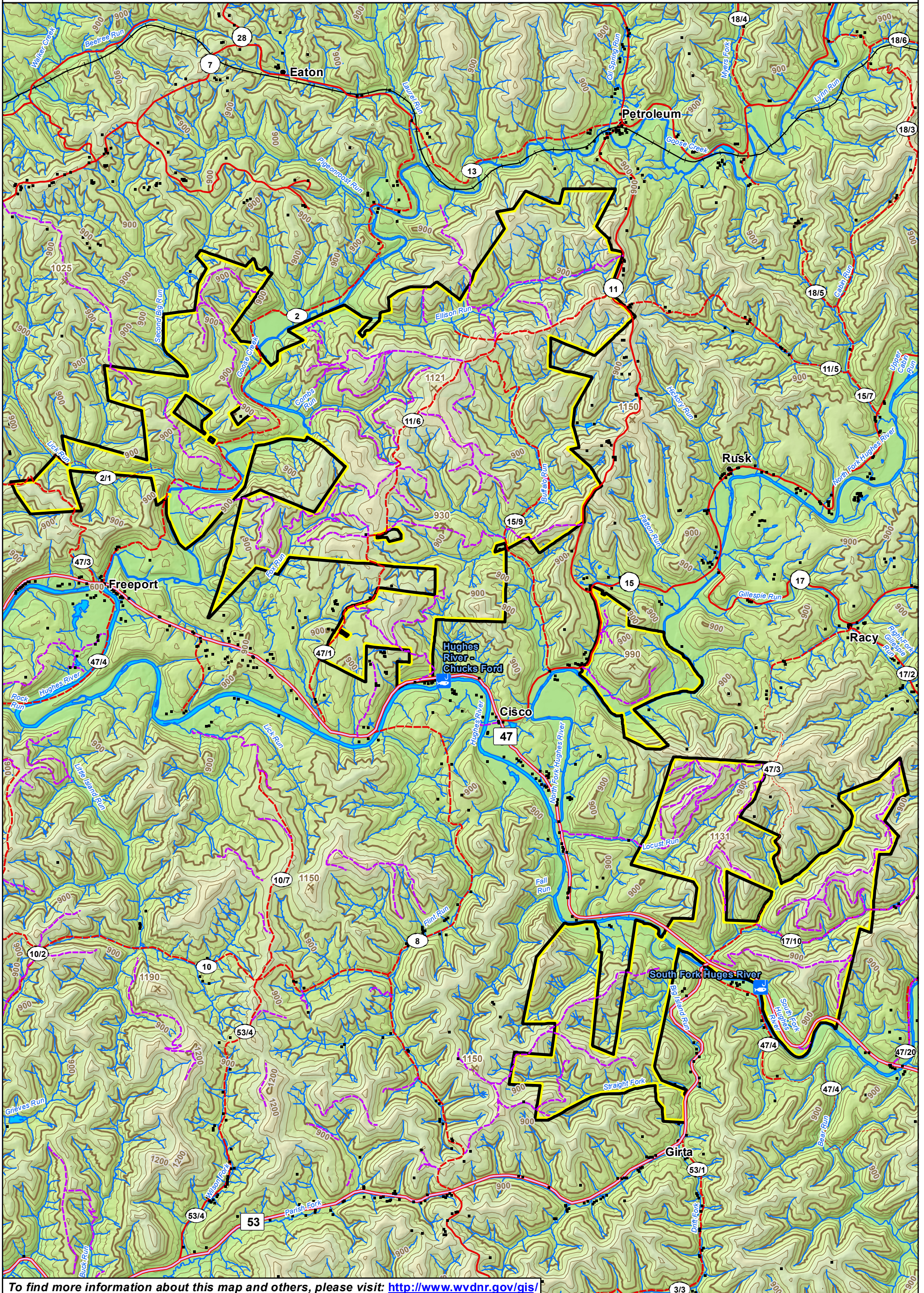
Wirt & Ritchie Counties, West Virginia

Contour Interval 60 Feet
Bold Line at Even 300 Feet

- Structure
- Gate
- Fishing Access Site
- WMA Road. Possible Restrictions. No ATVs.
- Hughes River Boundary



Prepared by
WV Division of Natural Resources
Wildlife Resources Section, GIS
Elkins, WV 26241
September 3, 2020



To find more information about this map and others, please visit: <http://www.wvdnr.gov/gis/>