

West Virginia
Wildlife Resources

Bowhunter

Cooperative Survey



2010

www.wvdnr.gov



Federal Aid Project

funded by your purchase of

hunting equipment

2010

**West Virginia Bowhunter
Survey**

West Virginia Division of Natural Resources

Wildlife Resources Section

And

West Virginia Bowhunters Association

Authors:

**Christopher W. Ryan
Charles D. Teets
Randy L. Tucker
Keith D. Krantz
Scott A. Warner**

Wildlife Resources Section Bulletin 11-03



TABLE OF CONTENTS

INTRODUCTION.....	1
METHODS	1
DISTRIBUTION OF HUNT TRIPS.....	2
DEER OBSERVATIONS	3
STATEWIDE.....	3
ECOLOGICAL REGIONS.....	3
WILDLIFE OBSERVATIONS	5
STATEWIDE.....	5
ECOLOGICAL REGIONS.....	7
2010 WV BOWHUNTER SURVEY QUESTIONNAIRE.....	8
OBSERVATIONS AND REMARKS.....	11
ATTENTION GETTERS	122
APPENDIX.....	23

INTRODUCTION

The annual West Virginia Bowhunter Survey is a survey conducted by the West Virginia Division of Natural Resources (DNR) in cooperation with the West Virginia Bowhunters Association. The survey was designed to collect bowhunter observations of deer and other selected wildlife species while hunting during the deer archery season. Because their hunting methods represent a field approach to sampling wildlife abundance, bowhunter observations can provide reliable measures of wildlife numbers.

This report represents the 16th survey conducted by the survey committee. The survey continues to generate valuable information about game species that would not be easily obtained. The success of this and previous surveys lies upon the cooperators. Without their support, this survey would not be possible. We welcome any comments or suggestions participating cooperators have to address questions of interest. The committee meets annually to construct the survey for the next hunting season. Because of the breadth of questions submitted by cooperators, some questions are cycled on a fixed year basis. This will explain why some may ask for a question and not see it on the survey for two or three years later.

From March to June 2011, the Wildlife Resources Section (WRS) conducted a major telephone survey for hunters participating in the 2010 hunting seasons. Last year's bowhunter survey questionnaire was designed to complement the telephone survey conducted on behalf of the WRS. We hope you participated if you were called. Results of the Bowhunter survey are included in this report. Hopefully, this will give us information to fine tune surveys in the future.

This year's bow season opens on October 1, 2011. This opening date is two weeks earlier than the traditional opening date. The DNR hopes this will help introduce younger hunters to participate.

The committee encourages cooperators to recruit additional bowhunters to participate in the survey. As our generation ages, the number of bowhunters a field declines. We are hopeful that the archery in schools program can help attract young hunters to the sport of bowhunting. To those passionate for the sport, what better way to spend a day in the great outdoors?

METHODS

Daily records and observations returned by bowhunter cooperators during the 2010 deer archery season were compiled and analyzed by the Bowhunter Survey Committee. This report is a summary of their findings. The survey instrument consisted

of a list of instructions, daily hunting record, and a questionnaire of hunting experiences and observations (Appendix). Cooperators recorded observations for morning and afternoon hours of hunting. Daily observations reflect the number of hours hunted, county hunted, land ownership, land type and if the land was posted against trespassing. Cooperators were asked to record the number of spike and forked antlered deer, fawns and antlerless deer seen, number of bucks chasing does, deer harvested by sex, and number of new scrapes seen on each outing. Cooperators also recorded the number of bears, squirrels, turkeys, grouse, raccoons, dogs, house cats, foxes, coyotes, and rabbits seen while hunting. Weather conditions (precipitation and wind) and habitat were recorded for each hunting trip.

Daily hunting reports began on the opening day of deer archery season (October 16, 2010) and were collected through Saturday (November 20, 2010) prior to the 2010 buck gun season. The duration of the survey was five (5) weeks. The survey included Sundays for counties open to Sunday hunting. **Daily records were excluded from the compilation if hours hunted were left blank.** Otherwise, all variables were assumed to be zero if a value for the corresponding variable was missing. Interest variables were stored in a database and summarized using a Pivot table. An observation rate for each species was calculated for each trip taken by a cooperator. The observation rate was calculated by dividing the number of animals seen by the number of hours spent for the trip. All observation rates are reported as number seen per 100 hours unless otherwise noted. The questionnaire portion of the survey was analyzed by generating frequency distributions for each interest variable. Remarks and suggestions were compiled by reviewing each survey for content and then categorizing them into similar groups. **Filling the daily record out completely and thoroughly is extremely important for an accurate analysis of the results.**

DISTRIBUTION OF HUNT TRIPS

Cooperators reported hunting in 54 West Virginia counties during the 2010 deer archery season (Fig. 1). A summary of trips, hours hunted per trip and deer observations per 100 hours is reported in Table 1. Several cooperators returned a survey without filling the questionnaire, while others filled the questionnaire but did not hunt for various reasons. Therefore, the sample size for each question or interest variable may differ. Statewide, 222 cooperators observed wildlife for a total of 11,620 hours and logged a total of 3,489 trips. Unfortunately, we observed another decline in the number of cooperators again this year. We encourage all cooperators to recruit new hunters to participate in the survey. Remember, their observations add strength to yours.

Cooperators took more hunting trips in the morning hours than in the morning (1,765 vs. 1,724) and hunted more time per trip (3.6 vs. 3.0). The average trip length (both A.M. and P.M.) was 3.33 hours.

County – At the county level, two counties (Wyoming and Wood) recorded more than 200 trips. All counties except Mineral and Hampshire reported some trips but as mentioned above, there is still a need for additional cooperators. We have found that a minimum of 80 to 100 trips per county are necessary for any meaningful conclusions. If you hunt in a county that has less than 80 daily trips it's another reason to go bow hunting. If at all possible, please help us recruit cooperators in your county.

Ecological Region – On a regional basis, the Eastern Panhandle and Mountains regions continue to report fewer trips (292 and 260, respectively). The number of cooperators for each region closely resembles the proportional of trips taken by region. Clearly, more cooperators are needed in the eastern portion of the state, but additional cooperators are welcome to participate regardless of region where in they hunt.

Land Ownership – In the last 5 years of the survey, the distribution of hunt trips based on land ownership are showing a shift towards hunt club/lease properties. Personal and private property continues to dominate the land type of choice by cooperators (Fig. 2). This year, 81 percent of hunting trips taken by cooperators were conducted on personal and private land. Company land, hunt club/lease, National Forest, and state owned properties comprise the remaining land categories.

DEER OBSERVATIONS

STATEWIDE

Observation rates for deer were compiled for the last five years by ecological region. Table 1 allows comparisons for trends in cooperator participation and observation rates. Since its inception (1995) bowhunter survey participation has declined, reaching its lowest number of cooperators this year (222). Because we lack enough cooperators, we cannot tell if all of your observations reflect actual changes in the herd or are anomalies tied to sampling error, low sample sizes or changes in hunter observation ability. Given that our average participant is hanging out in a tree xx times during the survey period, we expect the observed changes reflect the former rather than the later.

ECOLOGICAL REGIONS

Eastern Panhandle - This 8 county region had the fewest number of bowhunter cooperators (Table 1), who took 15.3 trips each during the season. These cooperators hunted for a little more than 3 hours per trip and saw 1.2 deer/hour or 3.5 deer/trip. Sixty-six percent of the bucks seen had branched antlers and they saw 0.54 fawns/doe. The number of bucks, does and fawns seen per 100 hours decreased considerably from

2009 and was the lowest in the past 5 years. Not surprisingly, the deer killed per square mile mirrored these observations (Fig. 3) and declined below the trend-line. While the number of bucks seen chasing does was not as high as some regions (Fig. 4); the third week of the season (October 31-November 6) was the best time to see this behavior. Because the acorn crop was the highest on record, does were on a higher nutritional plane and likely cycled into heat earlier than normal. During a more “normal” mast year, the peak of bucks chasing does would be during the fourth week of the season.

Mountains – This 5 county region had a few more Cooperators (Table 1) than the Eastern Panhandle; they took 12 hunting trips each and spent a little over 3 hours hunting per trip. In 2010 they saw 1.0 deer/hour or 3.1 deer/trip. Sixty-two percent of the bucks seen had branched antlers and 0.45 fawns were seen per doe. The number of bucks, does and fawns seen per 100 hours decreased considerably but was not the lowest on record (Fig. 3). The total number of deer seen/100 hours fell below the trend-line and was the lowest in the past 5 years. Following the decline in observation, the harvest per 1000 hours declined as well. Similar to all but the South Ecological Region, the third week of the season was the peak of the pre-rut (chasing period).

South – The 13 county South Region had 49 Cooperators (Table 1) who collectively went on 773 hunting trips, a continued decline in this supposedly bow dominated region. They averaged 16 trips each with 3.5 hours spent/trip. While hunting, they reported seeing 2.1 deer/hour or 7.4 deer/trip. Sixty-four percent of the bucks they saw had branched antlers and 0.55 fawns were seen per doe. The number of bucks, does and fawns seen per 100 hours increased over last year and exceeded the 5-year average. Unlike the other regions, the deer observation rate remained above the trend line and was the highest since this survey began (Fig. 3). Despite this increase, the deer kill/square mile declined below the trend line. Unlike the other regions, the number of bucks seen chasing does peaked during week 4 (November 7-13).

Central – This 9 county region had fewer Cooperators than last year and almost half as many that participated only 5 years ago (Table 1). They averaged almost 15 trips each spending 3.3 hours/trip. During these hunts, they saw 2.8 deer/hour or 9.2 deer/trip. Sixty-eight percent of the bucks they saw had branched antlers and 0.4 fawns were seen per doe. While the buck observation rate increased slightly, the numbers of does and fawns seen declined from last year and were less than their 5-year average. Following these observational declines, the harvest rate also declined (Fig. 3) to the lowest in the survey. Unlike the other regions, the magnitude of bucks chasing does remained high from week 3 through week 5. Bow hunters must have enjoyed this prolonged behavior.

West – Similar to the South Region, the West is comprised of 13 counties (Fig. 1). The 45 Cooperators this year took 16 trips each and averaged seeing 2.8 deer/hour or 8.8 deer/trip (Table 1). Sixty-nine percent of the bucks they saw had branched antlers and for every doe seen, they saw 0.46 fawns. While the buck and doe

observation rates increased from last year's levels, the fawn observation rate decreased. These increases in deer observation rates have not translated into more deer killed per square mile (Fig. 3), which is still on the decline. Since 1996, the deer harvest rate has been in decline. Similar to the Eastern Panhandle Region only with greater magnitude, the buck chasing doe index peaked in week 3 of the season (October 31-November 6) (Fig. 4).

Southwest – The 7 counties in this region adjoin 5 major rivers making them some of the more fertile areas in the state (Fig. 1). The 44 Cooperators took 18 trips each and spent about 3.5 hours per trip (Table 1). On these hunts they averaged seeing 2.3 deer/hour or 8.3 deer/trip. While the buck and doe observation rates increased in 2010, the fawn observation rate decreased, however all observation rates remained below the 5-year average. Of the bucks they saw, 70% of them had forked antlers and the average number of fawns seen per doe was 0.42. Unfortunately, for Southwest hunters, their seeing more deer did not translate into an increase in harvest, which continued its downward trend. If you were looking for bucks chasing does in 2010 (Fig. 4), the third week of the season (October 31-November 6) would have been the time to be in a treestand.

WILDLIFE OBSERVATIONS

One of the primary reasons the DNR and the West Virginia Bowhunters Association started the Bowhunter Survey was to monitor a number of different wildlife species through the examination of long-term trend data or yearly fluctuations. The results supplied by our cooperators have been invaluable in supplying data that would be economically infeasible for the DNR to obtain and have been helpful in setting and defending hunting regulations, preserving the hunting tradition, and explaining changes in wildlife populations. Results from the Bowhunter Survey help to validate data from other sources, may enable wildlife biologists to reexamine traditional indices, and are valuable for both hunters and the Wildlife Resources Section.

STATEWIDE

Statewide squirrel, raccoon, turkey, house cat and rabbit observations have not shown a trend (Fig. 5) through time since the beginning of the Bowhunter Survey. However, participants have observed yearly fluctuations in each of these species that are likely explained by a number of environmental conditions (Tables 4, 5, and 6). Squirrel abundance is most heavily influenced by hard mast conditions by directly impacting survival and reproduction. Although, statewide populations varied following years of hard mast abundance or failure they have remained consistent throughout our survey period and are representative of a healthy bushy-tail population. West Virginia is a very heavily forested state and will continue to supply a good population of bushytails for years to come. The excellent mast crop of 2010 should mean increased

reproduction in 2011 and plenty of young squirrels for hunters this fall. The Natural Resources Commission has changed the opening day of squirrel season to September 10, 2011.

Raccoon populations are also influenced by hard mast conditions but because their nocturnal habits may impact a bowhunter's ability to observe them it is more difficult for researchers to examine these trends. For example, during years of high mast availability raccoons may be easily observed by bowhunters because they are hunting over food sources used by numerous species. Raccoon numbers statewide were very close to their long-term average.

The number of turkeys and rabbits observed in 2010 were the lowest observation rates ever recorded during the Bowhunter Survey. The warmer weather in early June 2010 may have been a plus for our feathered friends but the poor statewide mast conditions in 2009 likely affected reproduction. As with turkey observations, rabbit observations have remained constant over time but have decreased to modern all time lows in 2010. Annual precipitation and West Virginia's aging forest or clean farming practices (habitat) are likely influencing rabbit populations.

Grouse and dogs have also shown a linear decrease over time during the Bowhunter Survey. The 2010 grouse observation rate was the lowest on record since the beginning of the Bowhunter Survey. While it is difficult to explain the number of dogs observed, a reduction in grouse observation rates are likely compounded by the poor brood production and lack of available habitat. Grouse need early successional habitat to thrive and this key component has been on the decline not only in West Virginia but the rest of the northeastern United States. Research has shown that mast influences the population dynamics of grouse in oak-hickory forests but this is compounded by the reduction in proper timber cutting activities, even on our public lands. The poor mast crop of 2009 was an additional factor in the low numbers of grouse observed. With the present state of the economy, the further reduction in the timber market will likely reduce timber harvesting and may impact grouse populations. The DNR has specifically increased the number of Early Successional Habitat areas on wildlife management areas. This was done in an attempt to increase the abundance of species that rely on these habitats and to demonstrate the proper management practices to private landowners.

Black bears and coyotes are the two species that have shown an increase throughout time. However, the bear observation rates finally took a dip in 2010. Conservative black bear seasons in the 1990's and early 2000's that protected a majority of females allowed for high adult female survival rates and are directly linked to the increased bear populations in West Virginia. However, early seasons designed to harvest additional adult female bears have likely curbed that population growth rate. In addition, bears are harder to observe during good mast years. Therefore, the 2010 observation rates were down considerably despite the all time record harvest in West Virginia.

ECOLOGICAL REGIONS

Eastern Panhandle—Squirrel, turkey, grouse, dogs, raccoons, foxes, house cats, and rabbits were below their 5-year average (Table 5). Many of these species' observation rates were likely influenced by the mast and precipitation conditions exhibited in this region. The horrific mast conditions of 2009 likely affected reproduction and survival of numerous species, especially in this region. The Eastern Panhandle is a unique ecological region because it is typically in a "rain shadow" compared to the rest of the state. This means the majority of the precipitation that comes from the west gets "caught" in the mountains and never reaches this region. Therefore, it may be greatly different than the rest of the state and is one reason early biologists separated it into its own region. Bear and coyote observations in this region for 2010 were the highest observed in last 5 years.

Mountains—Squirrel observations were lower but were not down as drastically as the Eastern Panhandle. The red oak acorns at higher elevations in 2009 likely helped to save some bushytails. Bear observations were a third of their 5-year average and were likely affected by mast and the early hunting seasons in the mountains during previous years. Turkey observations were also at a 5-year low and affected directly by mast, weather and forest management. Grouse populations were above the 5-year average in 2010.

South—Many of the species in this region were close to their 5-year average with the exception of turkey, grouse, and rabbits. All of these species were well below average. Squirrel rates were very close to their 5-year average.

Central—Squirrels had the largest increase in 2010 observational rates. This was quite interesting to the Bowhunter Survey Committee because of the poor 2009 mast conditions. Bear observation rates were well below average.

West—If there was ever one region that was close to the status quo it was the West Region. Most of the species observation rates were very close to the 5-year average in 2010. In fact, the 2010 turkey observation rates were the highest in the previous 5 years.

Southwest—Squirrel observations in 2010 were closer to the 5-year average in this region. Interestingly, we didn't have a cooperators observe a bear during 2010. The abundant mast crop likely had them spread throughout the landscape. Grouse observations have shown a linear decline in this region during the last 5 years while other species have fluctuated around their mean.

2010 WV BOWHUNTER SURVEY QUESTIONNAIRE

Each year the committee appends a questionnaire to the daily record form in order to solicit observations, comments and questions from cooperators. Following is a compilation of the responses. The questionnaire this year focused on the cooperator's hunting activity during the firearm season. This was to compliment a major hunter effort telephone survey conducted by the Wildlife Resources Section.

How many years have you hunted deer with a bow?

Bowhunters are a dedicated group of hunters. Their experience hunting from the tree stand uniquely qualifies them as acute observers. This year, the hunting experience of cooperators ranged from 2 to 67 years. On average, cooperators have 29 years of experience bow hunting for deer.

Do you hunt exclusively with a bow?

While bow hunting is a popular sport in West Virginia, the majority of our cooperators (75%) report that bow hunting only supplements the hunting arsenal. Only 19% of survey cooperators reported that their hunting activity was exclusively bow hunting. Urban archery areas are a good way to extend your archery hunting opportunities. These areas offer the same challenge hunting with a bow but do not count against your annual bag limit for deer.

Is the deer population in the area you hunt most increasing, decreasing or constant?

Responses from cooperators indicate that deer numbers have been on a decline during the last three years. This year was no exception. Over 41% of cooperators indicated that the deer population was declining in the area they hunt. Only 9% indicated that the deer population was increasing. The remaining 50% either did not answer the question or felt that the deer population was stable.

Deer biologists have worked hard to bring deer populations in line with existing habitat. In fact, deer numbers in many counties are near or at the desired levels. While deer number may be high in agricultural areas, deer numbers in the "big woods" may be low. This explains how one's perception of the deer population may vary greatly within a given county. In the end, it simply comes down to where you hunt.

Compared to last year, were deer racks this year smaller, larger or about the same?

The majority of cooperators (48%) reported that antler size was about the same during the 2010 hunting season. The 2011 should improve due to the abundant mast crop last year. Bucks should have entered the winter at a higher nutritional plane and better prepared for winter weather. With an average rainfall in spring and summer, abundant nutritious vegetation should be available to support antler growth for the 2011 season.

Is the oak mast condition in the area you hunt abundant, common or scarce?

Mast surveys conducted by DNR staff and volunteers in 2010 indicated early the conditions were going to be very good. In fact, the abundance of mast was the best the DNR had ever recorded in the 40 plus years the agency has conducted the annual survey. So hunters who didn't pay particular attention to last year's conditions or who were less adaptive to making adjustments to their tree stand locations had more difficulties finding deer last fall, which was one of the many reasons that contributed to the 31% decrease in the overall deer harvest. Since 2004, cooperators have been asked to report on oak mast conditions in the area they hunted, and once again, reports were almost identical with 87% reporting abundant conditions, 12% common and only 1% reporting conditions to be scarce. So what does last year's abundance of mast mean to hunters this year? Great News... Because of the abundance of mast last fall, deer were in better physiological condition going into winter (resulting in less mortality). Likewise, deer were in better physiological condition this spring, which may result in bucks having a little better antler development and does having a slightly higher reproductive success.

How many hunters live in your household who are at least 15 years of age?

Because of the national decline in the recruitment and retention of hunters, the committee wanted to see how many individuals (in a household) over the age of 15 hunted. What we found was 72% of our cooperators reported only having one person in the household that hunted, followed by 22% having two, 4% three people, and less than 1% with 4 or more people who hunted. These numbers are concerning due to the fact, that numerous studies have indicated that if youth are not raised in a family that hunts it's most likely they will never become involved in hunting.

Did you hunt bucks in West Virginia with a firearm in 2010?

Nearly 80% of our cooperators reported hunting during the 2010 buck season. Seventy percent of cooperators went hunting on opening day, 54% on opening Tuesday, and 50% on opening Wednesday. Cooperators hunted in all 51 counties

open to a buck firearm season. Eighteen percent of respondents were lucky enough to harvest a buck during the first 3 days of the buck firearm season. Three of the 236 respondents harvested 2 bucks during the first 3 days of the 2010 firearm season. Anytime that you can spend time afield with family and friends is a great day and it looks like many people took advantage of the additional opportunities.

Did you hunt antlerless deer during the firearm season (Class N)? If so, how many N stamps did you buy, where did you hunt, and how many antlerless deer did you harvest.

Harvesting antlerless deer is critical to the proper management of our deer population. Not only does harvesting antlerless deer ensure the health of the overall population, by maintaining levels within biological/sociological carrying capacities, it is also necessary to produce larger bucks; which (based on past surveys) is of interest to a lot of our cooperators. Because of this importance, the committee is interested in monitoring hunting trend information such as participation rates, and harvest success. Last year, only 43% of our cooperators said they antlerless deer hunt. Ouch... Of those who reported antlerless hunting, 69% said they purchased one N license, 24% said they purchased two and less than 7% said they purchased 3 or more. So where did they hunt..... We received responses from cooperators hunting in every county providing an antlerless season; however, the most popular counties were Wood (9%), Jackson (8), Preston (6%), and Marshall (6%) counties. So how successful were they? Thirty three (33) percent reported no antlerless deer killed, while 53% of our cooperators reported killing one antlerless deer, followed by 11% reported killing two, and 3% killed 3 or more.

Did you hunt deer in West Virginia with a muzzleloader during the 2010 muzzleloader season?

Wow, talk about right down the middle. Of the 217 respondents that answered the question asking if they hunted deer with a muzzleloader, 109 responded yes and 108 no. It's a good thing an odd number of people responded to this question or we may have had a tie!

Cooperators hunted in a wide array of counties with a muzzleloader during 2010 but there was no clear cut favorite. Only 8% of the cooperators reported purchasing a RM stamp during 2010; however, 13% harvested at least one deer. The majority of these deer were antlerless.

Did you hunt small game in West Virginia during 2010?

While the majority of our cooperators do not hunt exclusively with a bow, many prefer to hunt other species as well. Almost half (47%) hunted small game during the 2010 season.

Did you trap furbearers in West Virginia during 2010?

It appears that trapping is a dying art, at least among the bowhunter survey cooperators. Less than 4 % of respondents trapped during the 2010 season in West Virginia. Coyote and fox were the most common species trapped followed by raccoon and beaver.

OBSERVATIONS AND REMARKS

Each year, cooperators provide the committee with remarks, comments and special experiences. Cooperators also share their concerns about the sport of hunting. Sadly, a lot of the returned forms are left blank. I suppose many cooperators feel their comments are seen as a waste of time. With bow season starting earlier this year, we should all thank those cooperators who expressed that concern year after year through this survey. Reviewing past surveys revealed that comments about an earlier start to bow season appeared near the top of the list each year. With that being said, the committee expresses thanks to those who take the time to respond and hopefully we will all enjoy the extra days in the deer woods.

As usual, comments were varied and thoughtful. Three cooperators wanted to see the survey outline. The desire to legalize crossbows, changing youth seasons to either sex, killing more does and seeing fewer hunters was listed by four cooperators. The cold, bad weather and extending the survey till the end of the season was listed five times. Six cooperators listed support for Sunday hunting and being able to buy and use Class N stamps as needed. Slightly more cooperators (7) supported a 2 buck limit and thanked the DNR for their great work.

Check station improvement along with the desire to decrease the harvesting of does was listed by eight cooperators. The demand for some type of antler restriction was noted thirteen times.

One of the most common listed observances was the outstanding mast year we experienced last year (24). The comment (26) about less or a nonexistent deer herd appeared most frequently. The abundant mast (the best in 41 years) and mortality from the previous winter combined to make 2010 one of the most frustrating hunting season in memory. While the abundance of acorns kept deer almost completely nocturnal, it

also provided them with a bounty of nutrition. This combined with many bucks reaching another birthday, should truly make 2011 a year to remember.

ATTENTION GETTERS

- Saw two mink
- Had a forest fire near my deer stand
- Saw a doe with a red dog collar on.
- 3 deaths in my family (11-8 to 12-07) "kind of hard to hunt".
- Great year! Got a 10 point. Nine year old daughter bagged a nice doe. Thanks DNR for the youth season.
- Saw a fisher.
- Hunted very little, helped my wife battle cancer.
- Watched an eight point and a coyote "face off". After a few snorts, stomps and lunges the coyote backed down.
- Fell from my tree stand, broke ten ribs.
- Watched a bobcat and 4 bears at the same time. The cat hid in the leaves as the bears passed by.

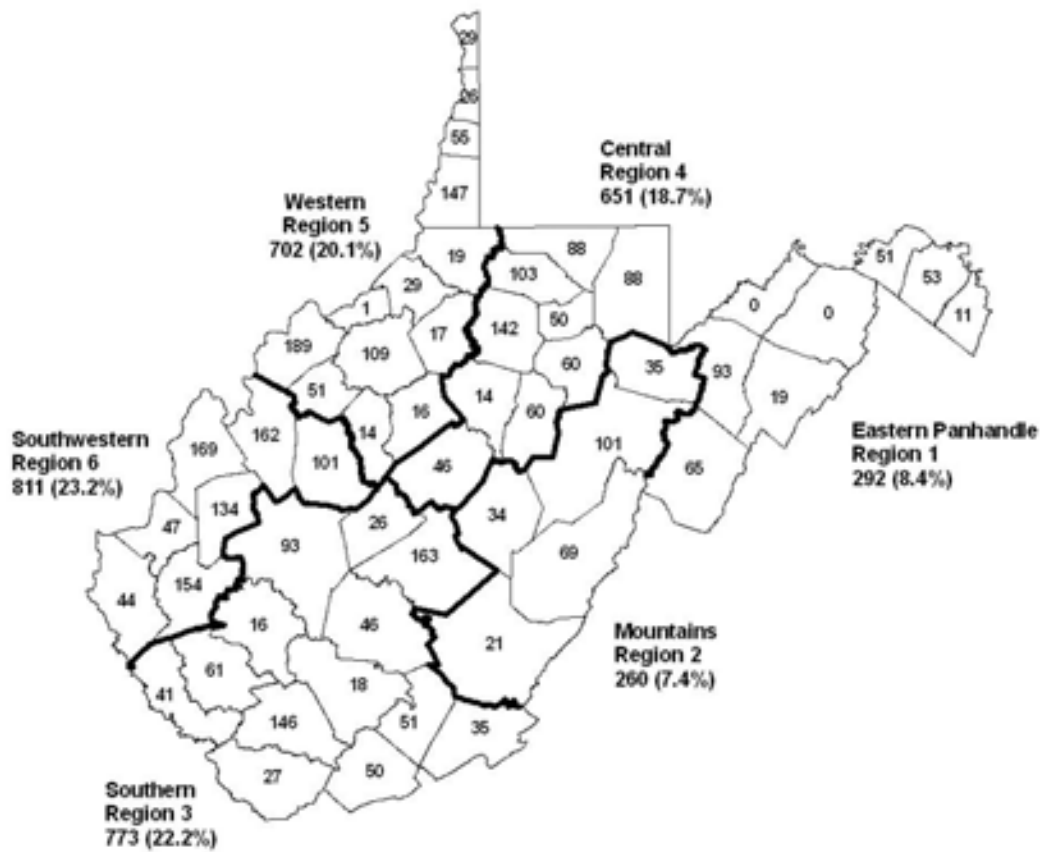


Figure 1. Number of West Virginia bowhunter survey cooperator trips by county and ecological region during the 2010 deer archery season.

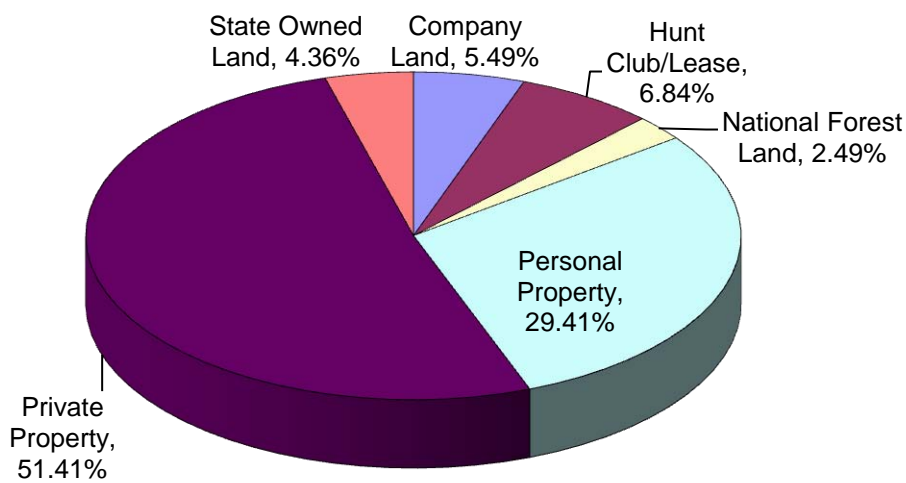


Figure 2. Frequency of hunting trips by landownership by West Virginia bowhunter survey cooperators during the 2010 deer archery season.

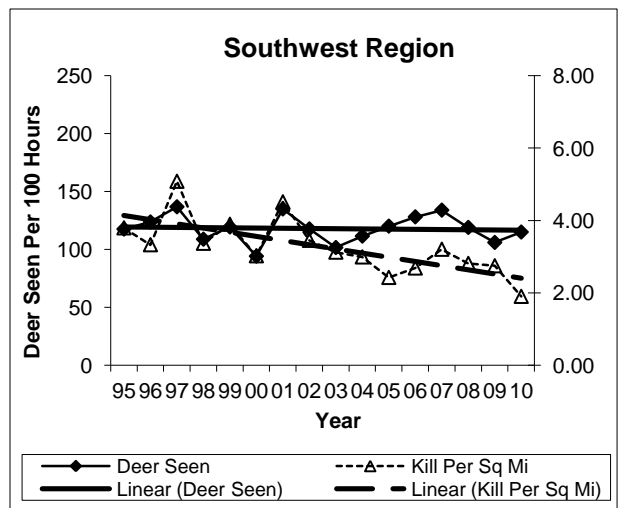
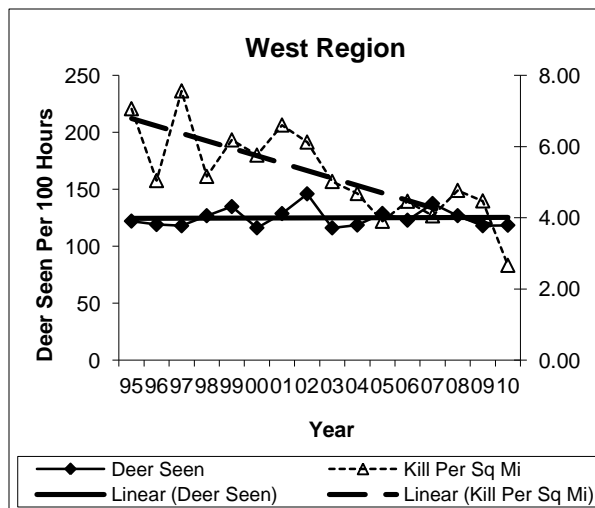
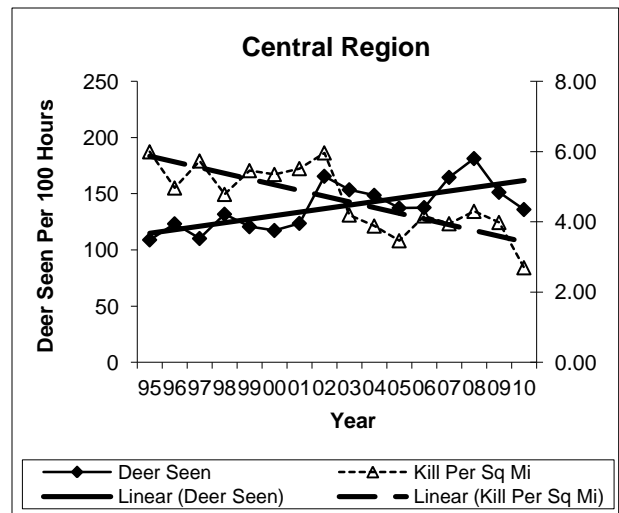
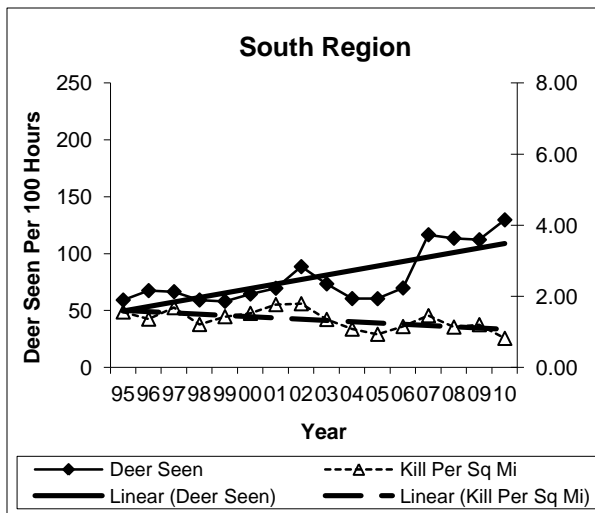
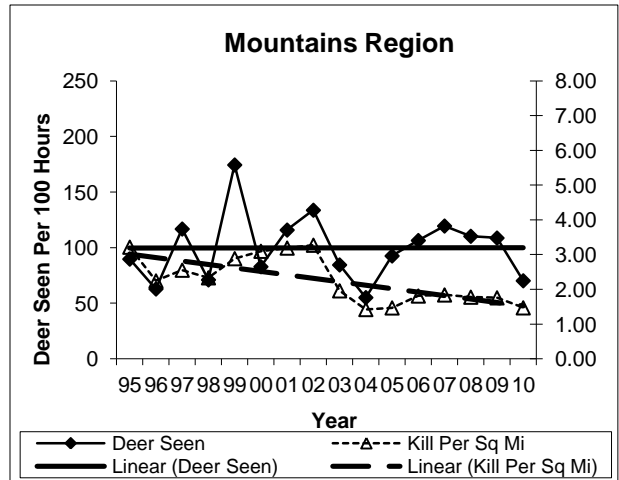
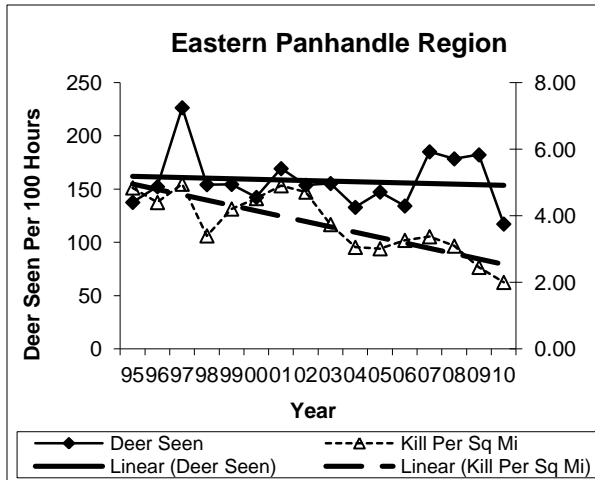


Figure 3. Deer seen per 100 hours during the deer archery season by West Virginia bowhunter cooperators and bucks killed per square mile by year and region.

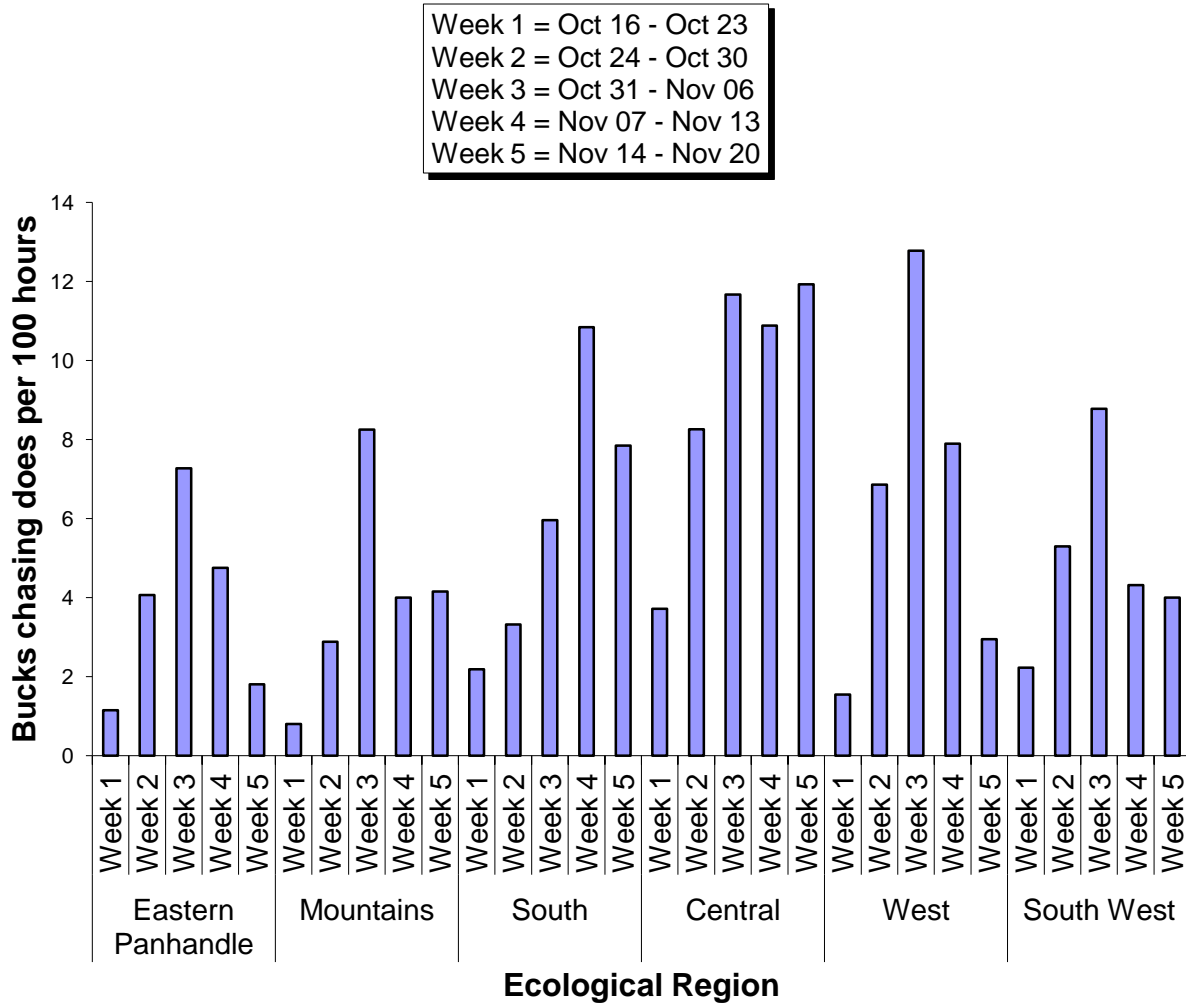


Figure 4. Bucks chasing does by week and ecological region by West Virginia bowhunter survey cooperators during the 2010 deer archery season.

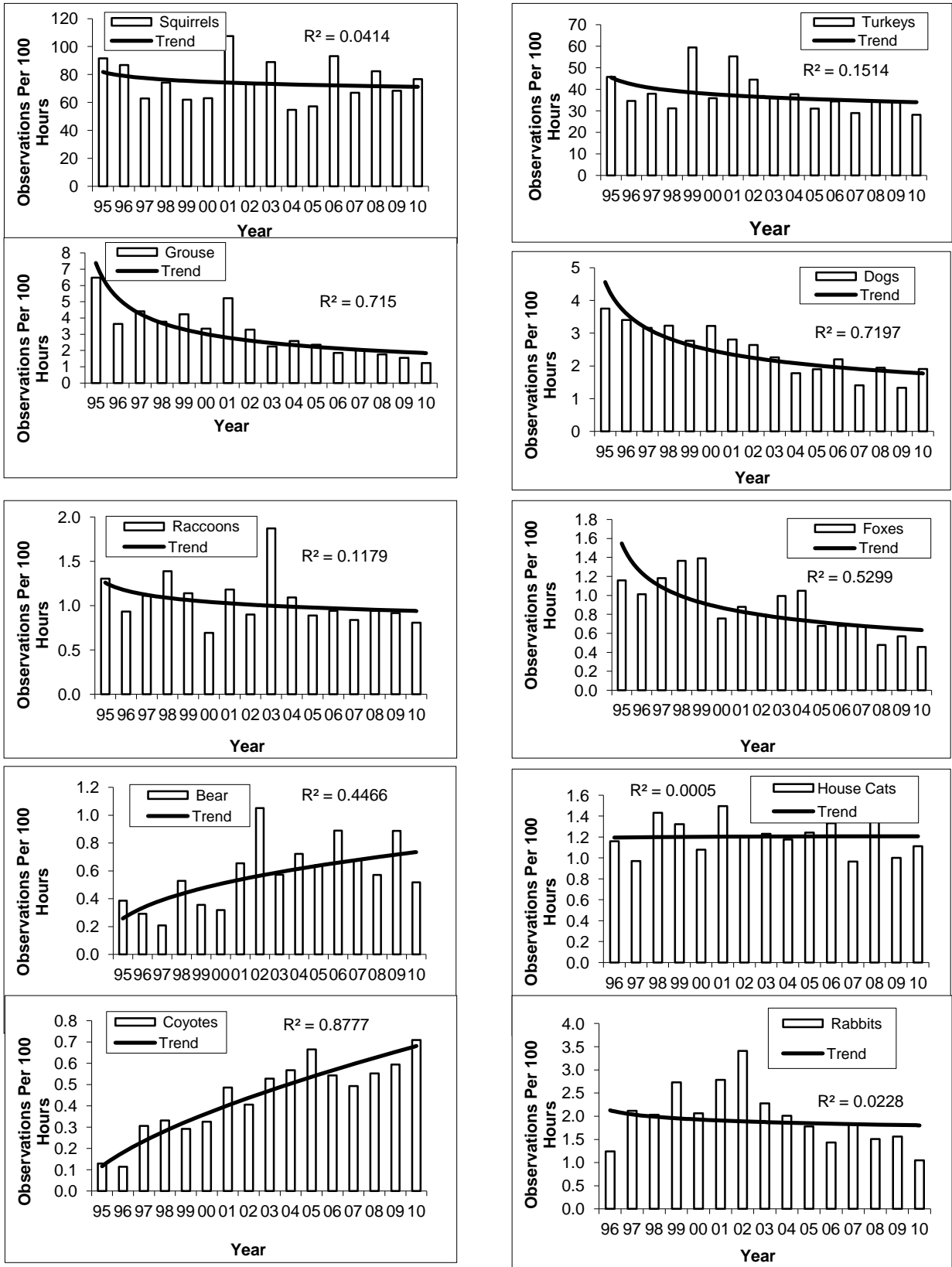


Figure 5. Statewide observation rates of wildlife species per 100 hours observed by West Virginia bowhunter survey cooperators from 1995 to 2010 during the deer archery season.

Table 1. Number of cooperators, hunt trips and deer seen per 100 hours by county and ecological region during the 2010 deer archery season by West Virginia Bowhunter Survey cooperators.

Ecological Region	County	Cooperators	Number Of Trips	Average Hours Per Trip	Buck Seen Per 100 Hrs	Does Seen Per 100 Hrs	Total Deer Seen Per 100 Hours	Bucks Killed Per 1,000 Hours	Does Killed Per 1,000 Hours	Total Killed Per 1,000 Hours
Eastern Panhandle	Berkeley	2	53	3.44	13.46	13.33	40.22	6.29	0.00	6.29
	Grant	4	93	2.85	18.54	76.50	165.68	14.34	10.75	25.09
	Hardy	2	19	2.61	42.63	70.88	143.33	0.00	0.00	0.00
	Jefferson	0	11	2.73	55.41	192.53	424.57	60.61	45.45	106.06
	Morgan	3	51	3.38	12.45	19.48	58.17	0.00	0.00	0.00
	Pendleton	8	65	3.70	8.33	64.67	97.66	0.00	28.72	28.72
Eastern Panhandle Average		19	292	3.22	17.24	56.45	117.29	7.99	11.53	19.52
	Greenbrier	4	21	3.17	11.22	39.85	82.88	0.00	0.00	0.00
	Pocahontas	2	69	2.66	4.86	31.64	58.51	7.25	0.00	7.25
	Randolph	10	101	3.27	12.93	28.90	74.88	8.91	14.85	23.76
	Tucker	2	35	3.53	8.48	14.74	33.22	0.00	0.00	0.00
	Webster	3	34	3.15	16.10	67.35	111.06	23.11	0.00	23.11
Mountains Average		21	260	3.12	10.47	33.63	70.30	8.41	5.77	14.18
	Boone	1	16	2.91	5.21	30.63	59.17	0.00	72.92	72.92
	Clay	3	26	3.37	8.01	12.96	28.02	0.00	0.00	0.00
	Fayette	4	46	3.61	15.03	36.39	66.11	4.35	6.21	10.56
	Kanawha	9	93	3.33	21.27	46.85	101.26	32.26	5.38	37.63
	Logan	2	61	3.94	19.63	31.24	66.38	20.49	4.10	24.59
	McDowell	1	27	4.44	11.19	11.85	33.79	45.27	0.00	45.27
	Mercer	5	50	3.77	9.81	27.73	54.69	15.00	5.00	20.00
	Mingo	3	41	3.73	11.25	25.78	44.88	8.13	0.00	8.13
	Monroe	2	35	2.97	77.52	154.16	342.65	19.05	0.00	19.05
	Nicholas	7	163	2.87	30.96	154.29	316.35	6.13	17.08	23.21
	Raleigh	2	18	2.67	10.74	36.57	113.11	0.00	37.04	37.04
	Summers	3	51	3.63	8.73	25.28	44.42	13.07	3.57	16.64
	Wyoming	7	146	4.06	18.65	24.26	59.84	13.13	4.57	17.69
	South Average		49	773	3.51	21.39	61.53	129.71	14.24	8.73
	Barbour	4	60	3.53	21.28	25.99	90.74	13.89	8.33	22.22
	Braxton	4	46	3.24	38.54	61.67	138.22	43.48	7.25	50.72
	Harrison	7	142	3.21	31.87	71.69	160.43	11.50	2.01	13.51
	Lewis	0	14	3.04	46.07	106.50	248.98	23.81	0.00	23.81
	Marion	6	103	3.39	24.19	43.67	113.17	5.18	3.88	9.06
	Monongalia	10	88	3.63	30.29	40.94	110.47	22.73	3.79	26.52
	Preston	6	88	2.99	25.98	59.26	137.89	20.83	10.82	31.66
	Taylor	2	50	3.02	26.62	40.70	129.07	25.00	0.00	25.00
	Upshur	5	60	3.21	18.61	85.69	174.76	12.50	0.00	12.50
	Central Average		44	651	3.28	27.82	56.16	135.98	17.15	4.31
	Brooke	3	26	3.05	24.38	61.90	108.44	9.62	0.00	9.62
	Calhoun	1	14	3.50	15.08	8.13	81.83	0.00	23.81	23.81
	Doddridge	0	17	2.88	21.38	41.89	82.95	0.00	0.00	0.00
	Gilmer	1	16	3.25	13.23	14.20	41.49	0.00	25.00	25.00
	Hancock	1	29	3.72	22.76	52.24	102.53	0.00	0.00	0.00
	Marshall	9	147	3.41	34.56	49.41	117.33	22.00	17.59	39.59
	Ohio	4	55	2.80	42.40	94.67	177.01	30.30	0.00	30.30
	Pleasants	1	1	2.00	0.00	0.00	0.00	0.00	0.00	0.00
	Ritchie	6	109	2.76	22.94	45.16	117.89	18.35	4.59	22.94
	Tyler	2	29	3.26	19.74	67.32	149.12	32.84	0.00	32.84
	Wetzel	3	19	2.74	21.05	24.56	53.51	52.63	0.00	52.63
	Wirt	4	51	3.14	21.00	45.12	86.96	9.80	11.20	21.01
	Wood	10	189	3.26	30.10	55.59	129.60	21.60	12.35	33.95
	West Average		45	702	3.16	28.10	52.42	118.40	19.50	9.58
	Cabell	2	47	3.31	22.88	75.58	145.57	5.32	21.28	26.60
	Jackson	12	162	3.53	22.26	58.37	109.69	7.20	3.70	10.91
	Lincoln	8	154	3.67	25.37	47.77	107.28	13.53	4.55	18.07
	Mason	9	169	3.38	22.57	51.84	107.40	19.63	3.55	23.18
	Putnam	6	134	3.42	24.95	69.16	161.40	4.98	7.52	12.50
	Roane	6	101	3.28	19.46	41.16	90.48	12.73	28.05	40.78
	Wayne	1	44	3.51	19.87	27.61	72.49	5.68	0.00	5.68
Southwest Average		44	811	3.46	22.92	53.96	114.97	11.12	8.31	19.43
Statewide		222	3,489	3.33	23.13	54.43	119.71	14.16	7.99	22.15

Table 2. Deer seen per 100 hours by ecological region during the 2006 to 2010 deer archery seasons by West Virginia Bowhunter Survey cooperators.

Ecological Region	Year	Cooperators	Trips	Average Hours Per Trip	Bucks Seen Per 100 Hours	Does Seen Per 100 Hours	Fawns Seen Per 100 Hours	Unknown Seen Per 100 Hours	Total Deer Seen Per 100 Hours
Eastern Panhandle	2006	37	624	3.12	23.73	51.64	38.53	20.35	134.24
	2007	19	387	3.11	24.59	91.03	56.63	12.88	185.12
	2008	16	345	2.75	30.17	78.71	52.69	15.34	178.51
	2009	20	343	2.93	24.06	90.96	49.34	16.31	182.24
	2010	19	292	3.22	17.24	56.45	34.04	9.56	117.29
Eastern Panhandle Average		111	398	3.03	24.09	71.36	45.70	15.75	157.40
Mountains	2006	26	402	3.55	18.50	47.38	25.26	15.40	106.54
	2007	23	229	3.53	19.75	61.36	21.76	16.70	119.57
	2008	25	311	3.38	15.71	53.96	27.50	12.53	110.35
	2009	29	378	3.07	14.91	45.78	25.81	21.64	108.77
	2010	21	260	3.12	10.47	33.63	15.18	11.02	70.30
Mountains Average		124	316	3.33	15.96	48.05	23.67	15.79	103.71
South	2006	74	1,165	3.78	12.21	32.02	17.19	8.43	69.85
	2007	61	993	3.71	15.58	66.76	28.03	6.27	116.64
	2008	57	834	3.55	21.87	50.65	29.90	10.48	113.53
	2009	48	885	3.48	19.33	50.50	34.44	7.36	112.25
	2010	49	773	3.51	21.39	61.53	36.66	10.13	129.71
South Average		289	930	3.62	17.53	51.21	28.30	8.41	105.66
Central	2006	90	1,197	3.41	24.24	58.45	36.39	18.62	137.70
	2007	63	882	3.31	24.94	87.81	35.21	16.57	164.55
	2008	48	667	3.24	30.07	79.68	53.43	17.20	181.33
	2009	48	819	3.22	26.68	65.95	38.52	19.46	151.27
	2010	44	651	3.28	27.82	56.16	32.24	19.76	135.98
Central Average		293	843	3.31	26.33	69.04	38.61	18.31	152.53
West	2006	71	1,079	3.37	22.59	52.68	30.23	17.33	122.84
	2007	58	789	3.27	26.51	76.54	21.32	13.12	137.50
	2008	56	805	3.13	33.89	60.21	33.55	17.87	146.36
	2009	44	768	3.11	23.28	49.61	28.72	15.58	117.95
	2010	45	702	3.16	28.10	52.42	24.34	13.54	118.40
West Average		274	829	3.22	26.58	58.09	27.90	15.67	128.52
Southwest	2006	88	1,156	3.38	23.57	56.83	28.30	19.36	128.06
	2007	50	782	3.29	20.86	75.43	21.72	15.85	133.86
	2008	50	982	3.31	26.72	58.29	35.92	17.07	138.38
	2009	46	760	3.35	20.89	44.02	24.59	16.09	105.98
	2010	44	811	3.46	22.92	53.96	22.62	15.46	114.97
Southwest Average		278	898	3.36	23.21	57.72	27.17	16.99	125.23
5-Year Average		1,369	21,071	3.35	22.78	59.18	31.34	14.89	128.45

Table 3. Statewide observation rates for white-tailed deer from 1995 to 2010 by West Virginia Bowhunter Survey cooperators.

Year	Cooperators	Trips	Average Hours Per Trip	Bucks Seen Per 100 Hours	Does Seen Per 100 Hours	Fawns Seen Per 100 Hours	Unknown Seen Per 100 Hours	Total Deer Seen Per 100 Hours
1995	462	7,484	3.24	16.64	93.08	0.00	0.00	109.72
1996	330	6,077	3.30	17.10	95.50	0.00	0.00	112.59
1997	317	5,342	3.33	17.66	103.94	0.00	0.00	121.60
1998	504	8,291	3.25	19.65	91.20	0.00	0.00	110.85
1999	464	7,846	3.38	18.83	99.32	0.00	0.00	118.15
2000	492	8,164	3.42	20.99	81.56	0.00	0.00	102.55
2001	494	8,571	3.45	19.89	99.74	0.00	0.00	119.63
2002	409	7,553	3.39	20.80	109.66	0.00	0.00	130.46
2003	407	6,546	3.34	21.21	91.64	0.00	0.00	112.86
2004	416	6,651	3.54	19.31	87.50	0.00	0.00	106.81
2005	465	7,434	3.35	19.39	65.70	17.69	11.46	114.24
2006	386	5,623	3.45	20.83	49.99	29.01	16.38	116.20
2007	274	4,062	3.39	21.85	76.91	29.44	12.90	141.10
2008	252	3,889	3.27	27.15	62.11	37.93	15.35	143.30
2009	235	3,898	3.24	21.91	55.31	32.75	15.28	125.93
2010	222	3,489	3.33	23.13	54.43	28.27	13.87	119.71
16-Year Average	383	6,308	3.36	20.03	85.49	27.78	14.00	117.32

Table 4. Wildlife species seen per 100 hours by ecological region during the 2010 deer archery season by West Virginia Bowhunter Survey cooperators.

Ecological Region	County	Squirrels Seen Per 100 Hours	Turkeys Seen Per 100 Hours	Grouse Seen Per 100 Hours	Dogs Seen Per 100 Hours	Raccoons Seen Per 100 Hours	Foxes Seen Per 100 Hours	Bears Seen Per 100 Hours	Housecats Seen Per 100 Hours	Coyotes Seen Per 100 Hours	Rabbits Seen Per 100 Hours	
Eastern Panhandle	Berkeley	66.76	9.06	0.00	0.00	0.00	3.21	1.45	0.47	0.00	1.89	
	Grant	72.65	17.92	0.00	0.00	0.72	0.57	1.08	0.27	0.00	0.00	
	Hardy	67.54	1.75	0.00	0.00	0.00	0.00	5.26	0.00	2.11	0.00	
	Jefferson	60.82	0.00	0.00	0.00	0.00	2.27	0.00	0.00	5.19	0.00	
	Morgan	50.00	2.03	0.00	0.00	1.37	0.65	0.65	0.98	0.00	0.00	
	Pendleton	89.32	9.62	2.15	0.44	0.00	0.82	3.46	0.00	0.44	1.21	
Eastern Panhandle Average		70.56	9.96	0.48	0.10	0.47	1.15	1.83	0.34	0.43	0.61	
	Greenbrier	66.61	18.03	2.78	0.00	0.00	0.00	0.00	0.00	0.00	0.00	
	Pocahontas	84.26	0.72	1.91	3.29	0.00	0.00	1.64	0.00	0.36	3.19	
	Randolph	73.65	6.93	6.88	0.99	0.91	0.00	0.25	0.33	0.57	0.00	
	Tucker	19.82	14.29	9.52	0.00	0.00	0.00	3.24	0.00	0.00	0.00	
	Webster	40.39	16.47	1.96	0.00	0.00	0.00	0.00	0.00	0.00	0.00	
Mountains Average		64.30	8.42	4.94	1.26	0.35	0.00	0.97	0.13	0.32	0.85	
	Boone	87.13	7.81	5.73	0.00	0.00	0.00	0.00	0.00	0.00	0.00	
	Clay	22.39	5.22	0.00	0.00	0.00	0.00	0.00	0.00	0.00	0.00	
	Fayette	75.57	18.17	0.00	0.62	0.43	0.00	0.54	0.00	4.74	0.54	
	Kanawha	76.68	33.71	0.75	1.59	1.65	0.70	0.00	0.84	0.00	0.36	
	Logan	78.58	1.15	1.39	4.92	0.00	0.00	0.00	0.00	0.84	0.00	
	McDowell	99.30	64.92	6.91	0.00	0.00	0.00	0.74	0.00	0.74	1.48	
	Mercer	48.24	16.87	0.50	2.33	0.00	0.00	0.33	0.67	0.00	0.80	
	Mingo	38.95	1.83	7.11	12.80	0.00	0.00	0.61	1.22	6.50	1.30	
	Monroe	86.90	42.86	0.00	0.00	0.95	0.95	0.95	0.00	0.00	0.00	
	Nicholas	71.24	6.78	1.23	3.07	0.41	0.00	0.10	0.72	0.74	0.55	
	Raleigh	113.97	5.56	0.00	0.00	0.00	2.78	18.52	0.00	0.00	0.00	
	Summers	44.27	9.74	1.63	2.87	0.00	0.00	0.00	0.00	0.00	1.37	
	Wyoming	33.71	6.28	2.51	1.27	0.00	0.34	1.64	0.00	0.23	0.79	
	South Average		62.03	14.35	1.81	2.52	0.35	0.26	0.92	0.36	0.92	0.60
		Barbour	95.60	92.35	0.00	1.51	0.00	0.83	0.00	0.56	0.00	0.83
Braxton		48.08	17.83	0.00	2.17	0.00	1.81	1.09	0.00	0.00	0.00	
Harrison		61.53	31.90	0.35	3.04	1.38	0.70	0.00	3.94	1.30	1.11	
Lewis		144.54	85.71	0.00	0.00	0.00	0.00	2.38	9.88	0.00	2.86	
Marion		103.68	22.51	1.17	1.38	0.49	0.97	0.00	0.97	0.39	2.54	
Monongalia		109.92	35.04	0.23	0.57	1.56	0.38	0.00	2.35	0.19	1.84	
Preston		37.99	50.02	1.78	3.30	0.00	0.28	0.00	0.85	0.00	0.00	
Taylor		74.10	40.30	1.61	0.00	6.58	0.00	0.00	2.60	0.00	1.67	
Upshur		73.06	51.67	0.00	4.18	1.11	0.83	0.00	11.07	0.00	1.53	
Central Average		77.56	41.49	0.66	2.08	1.20	0.68	0.13	2.93	0.37	1.30	
		Brooke	27.34	64.94	10.58	0.00	2.88	0.00	0.00	6.73	0.00	6.73
	Calhoun	98.21	22.62	2.38	0.00	0.00	0.00	0.00	0.00	0.00	0.00	
	Doddridge	86.67	27.48	0.00	2.61	0.00	0.00	0.00	0.00	0.00	0.00	
	Gilmer	116.93	0.00	0.00	0.00	0.00	0.00	0.00	0.00	0.00	0.00	
	Hancock	34.25	165.80	0.00	0.00	0.86	0.00	0.00	0.00	0.00	0.86	
	Marshall	62.55	39.65	0.23	1.04	3.86	0.00	0.00	1.09	0.23	1.78	
	Ohio	55.73	105.15	0.91	0.91	5.61	0.91	2.73	0.91	1.36	5.45	
	Pleasants	100.00	0.00	0.00	0.00	0.00	0.00	0.00	0.00	0.00	0.00	
	Ritchie	75.11	31.04	0.46	3.21	2.79	0.00	0.00	2.58	1.53	4.18	
	Tyler	28.70	14.78	2.01	6.90	0.00	0.00	0.00	0.00	0.00	0.00	
	Wetzel	67.54	10.53	0.00	0.00	0.00	0.00	0.00	0.00	0.00	1.75	
	Wirt	42.81	6.86	4.08	6.71	0.00	0.65	0.00	0.44	1.47	1.12	
	Wood	89.44	18.02	0.13	0.79	0.00	0.12	0.00	2.57	0.94	1.45	
	West Average		68.62	37.98	1.04	1.84	1.82	0.15	0.21	1.67	0.75	2.25
		Cabell	96.47	5.85	0.00	0.85	0.00	1.24	0.00	1.14	0.00	0.00
Jackson		65.16	58.14	0.00	0.67	0.00	0.51	0.00	1.15	0.72	0.10	
Lincoln		124.02	23.11	0.91	3.40	0.00	1.07	0.00	0.16	1.27	0.53	
Mason		104.02	33.13	0.65	3.04	1.15	0.00	0.00	0.00	1.72	0.15	
Putnam		137.80	70.99	0.40	2.24	0.19	1.06	0.00	0.49	1.06	1.70	
Roane		101.19	8.13	0.00	1.06	0.00	0.57	0.00	0.28	0.50	0.33	
Wayne		140.27	9.55	1.14	4.51	1.70	0.57	0.00	1.70	0.57	0.57	
Southwest Average		106.81	36.50	0.44	2.21	0.36	0.65	0.00	0.54	1.01	0.51	
Unknown		10.74	0.00	0.00	0.00	0.00	0.00	2.13	0.00	0.00	0.00	
Statewide		76.66	28.13	1.23	1.91	0.81	0.46	0.52	1.11	0.71	1.05	

Table 5. Wildlife species seen per 100 hours by ecological region during the 2006-2010 deer archery seasons by West Virginia Bowhunter Survey cooperators.

Ecological Region	Year	Squirrels	Turkeys	Grouse	Dogs	Raccoons	Foxes	Bears	House Cats	Coyotes	Rabbits
Eastern Panhandle	2006	123.53	28.85	0.68	0.89	0.65	1.96	1.12	1.74	0.33	0.67
	2007	119.99	24.70	0.64	0.26	0.48	1.61	1.00	1.13	0.04	0.59
	2008	86.24	34.14	0.33	0.12	0.59	1.24	0.59	0.81	0.12	0.47
	2009	111.22	28.42	0.33	0.10	0.49	1.11	1.00	1.81	0.22	1.15
	2010	70.56	9.96	0.48	0.10	0.47	1.15	1.83	0.34	0.43	0.61
Eastern Panhandle Average		106.55	26.07	0.52	0.38	0.55	1.50	1.09	1.27	0.23	0.69
Mountains	2006	54.42	17.31	6.00	1.02	1.38	0.32	3.35	0.44	1.10	0.68
	2007	32.03	17.35	3.06	0.43	0.51	0.09	4.98	0.11	0.18	2.20
	2008	55.34	10.25	5.03	1.09	0.62	0.39	2.62	0.57	0.41	2.35
	2009	72.79	16.63	3.82	0.54	0.21	0.81	2.89	0.21	0.23	1.66
	2010	64.30	8.42	4.94	1.26	0.35	0.00	0.97	0.13	0.32	0.85
Mountains Average		57.33	14.31	4.69	0.87	0.66	0.36	2.94	0.31	0.50	1.49
South	2006	79.84	18.17	2.77	1.52	0.53	0.35	0.84	0.28	0.78	1.37
	2007	52.91	31.76	4.27	2.02	0.82	0.50	0.83	1.02	0.43	2.10
	2008	64.51	23.45	2.30	3.05	0.56	0.35	0.65	0.98	0.77	1.04
	2009	64.88	33.62	1.58	1.80	0.59	0.11	1.97	0.53	1.11	0.52
	2010	62.03	14.35	1.81	2.52	0.35	0.26	0.92	0.36	0.92	0.60
South Average		65.54	24.30	2.62	2.12	0.58	0.32	1.03	0.62	0.79	1.18
Central	2006	74.53	46.02	1.57	1.59	1.21	0.60	0.83	1.40	0.59	1.52
	2007	58.79	32.90	1.71	1.30	1.63	0.37	0.33	1.07	0.53	2.37
	2008	70.95	44.98	2.03	1.08	1.44	0.54	0.00	2.41	0.38	1.84
	2009	44.06	35.19	1.50	1.40	1.11	0.72	0.27	0.93	0.22	2.17
	2010	77.56	41.49	0.66	2.08	1.20	0.68	0.13	2.93	0.37	1.30
Central Average		65.26	40.31	1.52	1.49	1.31	0.58	0.38	1.64	0.44	1.84
West	2006	86.16	35.09	1.33	2.04	1.15	0.43	0.74	2.19	0.33	1.51
	2007	52.64	23.21	1.34	1.62	0.54	0.97	0.03	0.99	0.26	2.38
	2008	79.37	34.97	1.40	0.60	1.64	0.51	0.29	2.32	0.54	1.78
	2009	65.40	33.05	1.98	1.09	2.14	0.47	0.17	1.82	0.61	2.55
	2010	68.62	37.98	1.04	1.84	1.82	0.15	0.21	1.67	0.75	2.25
West Average		71.63	32.91	1.42	1.48	1.42	0.51	0.32	1.83	0.48	2.05
Southwest	2006	129.21	46.53	0.93	4.82	0.90	0.76	0.16	1.62	0.37	1.88
	2007	92.62	32.27	0.77	1.42	0.53	0.67	0.13	0.93	1.08	0.85
	2008	114.72	43.73	0.91	3.58	0.57	0.28	0.46	1.25	0.70	1.56
	2009	80.27	45.83	0.55	1.92	0.40	0.68	0.00	0.84	0.74	1.27
	2010	106.81	36.50	0.44	2.21	0.36	0.65	0.00	0.54	1.01	0.51
Southwest Average		107.38	41.49	0.74	3.00	0.58	0.61	0.16	1.09	0.74	1.28
Statewide 5-year average		78.86	32.29	1.72	1.80	0.90	0.59	0.72	1.20	0.57	1.48

Table 6. Wildlife species observed per 100 hours from 1995 to 2010 during the deer archery season by West Virginia Bowhunter Survey cooperators.

Year	Squirrels	Turkeys	Grouse	Dogs	Raccoons	Foxes	Bear	House Cats	Coyotes	Rabbits
1995	91.62	45.65	6.48	3.75	1.30	1.16	0.39	N/A	0.13	N/A
1996	86.84	34.52	3.63	3.40	0.93	1.01	0.29	1.16	0.11	1.24
1997	63.00	37.90	4.42	3.16	1.11	1.18	0.21	0.97	0.31	2.12
1998	74.23	31.08	3.78	3.23	1.39	1.36	0.53	1.43	0.33	2.03
1999	62.12	59.32	4.23	2.77	1.14	1.39	0.36	1.32	0.29	2.73
2000	63.02	35.80	3.34	3.22	0.69	0.76	0.32	1.08	0.33	2.06
2001	107.50	55.20	5.23	2.80	1.18	0.88	0.66	1.50	0.49	2.79
2002	73.74	44.46	3.29	2.64	0.90	0.80	1.05	1.20	0.41	3.41
2003	88.89	36.44	2.25	2.27	1.87	0.99	0.57	1.23	0.53	2.28
2004	54.79	37.64	2.59	1.78	1.09	1.05	0.72	1.18	0.57	2.01
2005	57.26	31.02	2.36	1.90	0.89	0.68	0.64	1.24	0.66	1.78
2006	93.12	34.28	1.86	2.20	0.94	0.68	0.89	1.33	0.54	1.43
2007	66.99	28.96	2.06	1.41	0.84	0.68	0.68	0.97	0.49	1.84
2008	82.36	34.38	1.76	1.94	0.94	0.48	0.57	1.51	0.55	1.51
2009	68.42	34.05	1.55	1.33	0.91	0.57	0.89	1.00	0.59	1.56
2010	76.66	28.13	1.23	1.91	0.81	0.46	0.52	1.11	0.71	1.05

APPENDIX

PLEASE RETURN BY DECEMBER 31, 2010

Please complete this section only		Land Parcel		Land Type		DEER												OTHER WILDLIFE												Total																																																																																																																																																																																																																																																																																																																																																																																																																																																																																																																																																																																																																																																																																																																																																																																																																																																																																																																																																																																																																																																																																																																																																																																																																																																																																																																																																																																																																																																																																																									
		County	Parcel No.	Land Use	Forest	Other	1	2	3	4	5	6	7	8	9	10	11	12	13	14	15	16	17	18	19	20	21	22	23	24	25	26	27	28	29	30	31	32	33	34	35	36	37	38	39	40	41	42	43	44	45	46	47	48	49	50	51	52	53	54	55	56	57	58	59	60	61	62	63	64	65	66	67	68	69	70	71	72	73	74	75	76	77	78	79	80	81	82	83	84	85	86	87	88	89	90	91	92	93	94	95	96	97	98	99	100	101	102	103	104	105	106	107	108	109	110	111	112	113	114	115	116	117	118	119	120	121	122	123	124	125	126	127	128	129	130	131	132	133	134	135	136	137	138	139	140	141	142	143	144	145	146	147	148	149	150	151	152	153	154	155	156	157	158	159	160	161	162	163	164	165	166	167	168	169	170	171	172	173	174	175	176	177	178	179	180	181	182	183	184	185	186	187	188	189	190	191	192	193	194	195	196	197	198	199	200	201	202	203	204	205	206	207	208	209	210	211	212	213	214	215	216	217	218	219	220	221	222	223	224	225	226	227	228	229	230	231	232	233	234	235	236	237	238	239	240	241	242	243	244	245	246	247	248	249	250	251	252	253	254	255	256	257	258	259	260	261	262	263	264	265	266	267	268	269	270	271	272	273	274	275	276	277	278	279	280	281	282	283	284	285	286	287	288	289	290	291	292	293	294	295	296	297	298	299	300	301	302	303	304	305	306	307	308	309	310	311	312	313	314	315	316	317	318	319	320	321	322	323	324	325	326	327	328	329	330	331	332	333	334	335	336	337	338	339	340	341	342	343	344	345	346	347	348	349	350	351	352	353	354	355	356	357	358	359	360	361	362	363	364	365	366	367	368	369	370	371	372	373	374	375	376	377	378	379	380	381	382	383	384	385	386	387	388	389	390	391	392	393	394	395	396	397	398	399	400	401	402	403	404	405	406	407	408	409	410	411	412	413	414	415	416	417	418	419	420	421	422	423	424	425	426	427	428	429	430	431	432	433	434	435	436	437	438	439	440	441	442	443	444	445	446	447	448	449	450	451	452	453	454	455	456	457	458	459	460	461	462	463	464	465	466	467	468	469	470	471	472	473	474	475	476	477	478	479	480	481	482	483	484	485	486	487	488	489	490	491	492	493	494	495	496	497	498	499	500	501	502	503	504	505	506	507	508	509	510	511	512	513	514	515	516	517	518	519	520	521	522	523	524	525	526	527	528	529	530	531	532	533	534	535	536	537	538	539	540	541	542	543	544	545	546	547	548	549	550	551	552	553	554	555	556	557	558	559	560	561	562	563	564	565	566	567	568	569	570	571	572	573	574	575	576	577	578	579	580	581	582	583	584	585	586	587	588	589	590	591	592	593	594	595	596	597	598	599	600	601	602	603	604	605	606	607	608	609	610	611	612	613	614	615	616	617	618	619	620	621	622	623	624	625	626	627	628	629	630	631	632	633	634	635	636	637	638	639	640	641	642	643	644	645	646	647	648	649	650	651	652	653	654	655	656	657	658	659	660	661	662	663	664	665	666	667	668	669	670	671	672	673	674	675	676	677	678	679	680	681	682	683	684	685	686	687	688	689	690	691	692	693	694	695	696	697	698	699	700	701	702	703	704	705	706	707	708	709	710	711	712	713	714	715	716	717	718	719	720	721	722	723	724	725	726	727	728	729	730	731	732	733	734	735	736	737	738	739	740	741	742	743	744	745	746	747	748	749	750	751	752	753	754	755	756	757	758	759	760	761	762	763	764	765	766	767	768	769	770	771	772	773	774	775	776	777	778	779	780	781	782	783	784	785	786	787	788	789	790	791	792	793	794	795	796	797	798	799	800	801	802	803	804	805	806	807	808	809	810	811	812	813	814	815	816	817	818	819	820	821	822	823	824	825	826	827	828	829	830	831	832	833	834	835	836	837	838	839	840	841	842	843	844	845	846	847	848	849	850	851	852	853	854	855	856	857	858	859	860	861	862	863	864	865	866	867	868	869	870	871	872	873	874	875	876	877	878	879	880	881	882	883	884	885	886	887	888	889	890	891	892	893	894	895	896	897	898	899	900	901	902	903	904	905	906	907	908	909	910	911	912	913	914	915	916	917	918	919	920	921	922	923	924	925	926	927	928	929	930	931	932	933	934	935	936	937	938	939	940	941	942	943	944	945	946	947	948	949	950	951	952	953	954	955	956	957	958	959	960	961	962	963	964	965	966	967	968	969	970	971	972	973	974	975	976	977	978	979	980	981	982	983	984	985	986	987	988	989	990	991	992	993	994	995	996	997	998	999	1000	1001	1002	1003	1004	1005	1006	1007	1008	1009	1010	1011	1012	1013	1014	1015	1016	1017	1018	1019	1020	1021	1022	1023	1024	1025	1026	1027	1028	1029	1030	1031	1032	1033	1034	1035	1036	1037	1038	1039	1040	1041	1042	1043	1044	1045	1046	1047	1048	1049	1050	1051	1052	1053	1054	1055	1056	1057	1058	1059	1060	1061	1062	1063	1064	1065	1066	1067	1068	1069	1070	1071	1072	1073	1074	1075	1076	1077	1078	1079	1080	1081	1082	1083	1084	1085	1086	1087	1088	1089	1090	1091	1092	1093	1094	1095	1096	1097	1098	1099	1100	1101	1102	1103	1104	1105	1106	1107	1108	1109	1110	1111	1112	1113	1114	1115	1116	1117	1118	1119	1120	1121	1122	1123	1124	1125	1126	1127	1128	1129	1130	1131	1132	1133	1134	1135	1136	1137	1138	1139	1140	1141	1142	1143	1144	1145	1146	1147	1148	1149	1150	1151	1152	1153	1154	1155	1156	1157	1158	1159	1160	1161	1162	1163	1164	1165	1166	1167	1168	1169	1170	1171	1172	1173	1174	1175	1176	1177	1178	1179	1180	1181	1182	1183	1184	1185	1186	1187	1188	1189	1190	1191	1192	1193	1194	1195	1196	1197	1198	1199	1200	1201	1202	1203	1204	1205	1206	1207	1208	1209	1210	1211	1212	1213	1214	1215	1216	1217	1218	1219	1220	1221	1222	1223	1224	1225	1226	1227	1228	1229	1230	1231	1232	1233	1234	1235	1236	1237	1238	1239	1240	1241	1242	1243	1244	1245	1246	1247	1248	1249	1250	1251	1252	1253	1254	1255	1256	1257	1258	1259	1260	1261	1262	1263	1264	1265	1266	1267	1268	1269	1270	1271	1272	1273	1274	1275	1276	1277	1278	1279	1280	1281	1282	1283	1284	1285	1286	1287	1288	1289	1290	1291	1292	1293	1294	1295	1296	1297	1298	1299	1300	1301	1302	1303	1304	1305	1306	1307	1308	1309	1310	1311	1312	1313	1314	1315	1316	1317	1318	1319	1320	1321	1322	1323	1324	1325	1326	1327	1328	1329	1330	1331	1332	1333	1334	1335	1336	1337	1338	1339	1340	1341	1342	1343	1344	1345	1346	1347	1348	1349	1350	1351	1352	1353	1354	1355	1356	1357	1358	1359	1360	1361	1362	1363	1364	1365	1366	1367	1368	1369	1370	1371	1372	1373	1374	1375	1376	1377	1378	1379	1380	1381	1382	1383	1384	1385	1386	1387	1388	1389	1390	1391	1392	1393	1394	1395	1396	1397	1398	1399	1400	1401	1402	1403	1404	1405	1406	1407	1408	1409	1410	1411	1412	1413	1414	1415	1416	1417	1418	1419	1420	1421	1422	1423	1424	1425	1426	1427	1428	1429	1430	1431	1432	1433	1434	1435	1436	1437	1438	1439	1440	1441	1442	1443	1444	1445	1446	1447	1448	1449	1450	1451	1452	1453	1454	1455	1456	1457	1458	1459	1460	1461	1462	1463	1464	1465	1466	1467	1468	1469	1470	1471	1472	1473

PLEASE RETURN BY DECEMBER 31, 2010

Date and approximate location (county)	Land				Land Type	DEER				OTHER WILDLIFE			
	Acres	Acres	Acres	Acres		Seen	Scrapes	Seen	Scrapes	Seen	Scrapes	Seen	Scrapes
1. Forest land													
2. Pasture													
3. Agricultural													
4. Other													
5. Forest													
6. Pasture													
7. Agricultural													
8. Other													
9. Forest													
10. Pasture													
11. Agricultural													
12. Other													
13. Forest													
14. Pasture													
15. Agricultural													
16. Other													
17. Forest													
18. Pasture													
19. Agricultural													
20. Other													
21. Forest													
22. Pasture													
23. Agricultural													
24. Other													
25. Forest													
26. Pasture													
27. Agricultural													
28. Other													
29. Forest													
30. Pasture													
31. Agricultural													
32. Other													
33. Forest													
34. Pasture													
35. Agricultural													
36. Other													
37. Forest													
38. Pasture													
39. Agricultural													
40. Other													
41. Forest													
42. Pasture													
43. Agricultural													
44. Other													
45. Forest													
46. Pasture													
47. Agricultural													
48. Other													
49. Forest													
50. Pasture													
51. Agricultural													
52. Other													
53. Forest													
54. Pasture													
55. Agricultural													
56. Other													
57. Forest													
58. Pasture													
59. Agricultural													
60. Other													
61. Forest													
62. Pasture													
63. Agricultural													
64. Other													
65. Forest													
66. Pasture													
67. Agricultural													
68. Other													
69. Forest													
70. Pasture													
71. Agricultural													
72. Other													
73. Forest													
74. Pasture													
75. Agricultural													
76. Other													
77. Forest													
78. Pasture													
79. Agricultural													
80. Other													
81. Forest													
82. Pasture													
83. Agricultural													
84. Other													
85. Forest													
86. Pasture													
87. Agricultural													
88. Other													
89. Forest													
90. Pasture													
91. Agricultural													
92. Other													
93. Forest													
94. Pasture													
95. Agricultural													
96. Other													
97. Forest													
98. Pasture													
99. Agricultural													
100. Other													

2010 WEST VIRGINIA BOWHUNTER SURVEY DAILY RECORD

**INSTRUCTIONS
2010 BOWHUNTER SURVEY**

1. Post your survey form in a convenient spot such as your refrigerator door, mud room or garage entrance, etc., where you'll see it when you return from hunting.
2. For the appropriate date, enter the **number of hours hunted** in the morning (**am**) or afternoon (**pm**) or both if you hunted both am and pm (see example).
3. List the **county** where you hunted. If you hunted in a different location in the morning and afternoon, record the county you hunted each half of the day (see example).
4. Record the **ownership of the land** where you hunted and whether land was **posted, yes or no**. If you hunted in different locations in the morning and afternoon, record the land ownership and posted vs. Not posted for each half of the day (see example).
5. Enter the dominant **land type** where you hunted. If you hunted in the woods, enter 'w' for woods. If you hunted in a field, enter 'f' for fields. If you hunted along the edge of a field (clearing, opening), enter 'e' for edge.
6. If you saw no animals or birds while hunting, **simply** leave the spaces blank or enter 0.
7. If you observed any of the animals and birds listed, enter the **number of animals or birds seen** under the animals or birds column (see example). Do not record second or third sightings of the same animal or bird on the same hunt as more than one animal or bird sighted; if you see what you feel is the same animal or bird on different hunts, record it for each hunt.
8. For the deer you see, please record the **number of spike and fork antlered bucks, adult does and fawns**. If you are not **completely sure** of a deer's sex, record it as an unknown. If you killed a deer, **record the number of deer killed by sex. (@ forked antler deer will have at least two points on one antler.)**
9. At the end of the survey period or if you stop hunting before November 20, return the daily record form by placing the form in the business reply envelope (no postage necessary) or taping the folded forms and attaching a 44 cent stamp where indicated. **IF YOU PLAN TO HUNT DURING THE 2010 FIREARMS SEASON, PLEASE WAIT UNTIL YOU HAVE FINISHED HUNTING FOR THE YEAR BEFORE FILLING OUT AND RETURNING THE QUESTIONNAIRE.**

THANKS FOR YOUR HELP!!

Place Stamp Here

RANDY TUCKER
WV-DNR
PO BOX 67
ELKINS WV 26241

Tape Here

Tape Here

2010 WEST VIRGINIA BOWHUNTER SURVEY

1. How many years have you hunted deer with a bow? _____ years.
2. What is your zip code? _____
3. Do you hunt deer exclusively with a bow? 1. Yes 2. No
4. Is the deer population in the area you hunt most: (circle) 1. Increasing 2. Decreasing or 3. Constant?
List the County _____
5. Compared to last year, were deer racks this year (circle) 1. Smaller 2. Larger 3. About the same?
6. Is the oak mast (acorns) this year in the area you hunt? (circle) 1. Abundant 2. Common 3. Scarce
List County _____
7. How many people living in your household 15 years of age or older, including yourself, have hunted deer in West Virginia during 2010? _____
8. Did you hunt bucks in West Virginia with a firearm in 2010 (circle)? 1. Yes 2. No
9. If question 8 is Yes, the first three days of the 2010 firearm season were Monday, Nov. 22, Tuesday, Nov. 23 and Wednesday, Nov. 24. On which of these three days did you hunt bucks with a firearm in West Virginia? (Check all that apply)
____ Monday, November 22 _____ Tuesday, November 23 _____ Wednesday, November 24
____ I did not hunt bucks with firearms during the first three days of buck gun season
10. In what counties did you hunt with a firearm during the FIRST THREE DAYS of the buck firearms season?

11. How many antlered bucks did you kill with a firearm in West Virginia during the FIRST THREE DAYS of the buck firearms season? _____
12. Did you hunt antlerless deer in West Virginia with a firearm during the 2010 antlerless season? 1. Yes 2. No
13. If question 12 is Yes,
 - a. In what ONE county did you hunt antlerless deer with a firearm MOST OFTEN in West Virginia during the 2010 season? _____
 - b. How many Class N stamps did you buy in 2010? _____
 - c. How many antlerless deer did you kill with a firearm in West Virginia during the 2010 season? _____
 - d. How many antlerless deer were button bucks? _____
14. Did you hunt deer in West Virginia with a muzzleloader during the 2010 muzzleloader season? 1. Yes 2. No
15. If question 14 is Yes,
 - a. In what ONE county did you hunt deer with a muzzleloader MOST OFTEN in West Virginia during the 2010 muzzleloader season? _____
 - b. How many Class RM stamps did you buy in 2010? _____
 - c. How many deer did you kill in West Virginia with a muzzleloader during the 2010 muzzleloader season? _____
 - d. How many muzzleloader killed deer were: Bucks _____ Button Bucks _____ Does _____
16. Did you hunt small game in West Virginia during 2010 (circle) 1. Yes 2. No
If Yes, list species hunted _____
17. Did you trap furbearers in West Virginia during 2010? (circle) 1. Yes 2. No
If Yes, list species trapped _____
18. Remarks or observations (please include unusual experiences, your opinion on hunting season regulations, weather, etc.)

25. List any question(s) that you would like to see on future surveys: _____

26. Please list the name and address of a friend or relative who might want to participate in this survey next year: _____

PLEASE RETURN BY DECEMBER 31, 2010

WANTED



We would like you to submit your hunting story to the Bowhunter Survey Committee. The Bowhunter Survey Committee is planning to implement a new section to the Bowhunter Survey Report. This new section will feature stories and pictures of successful cooperators.

Recommendations for photo stories:

1. Clean up any blood from the animal. Make sure the animal is presentable. Avoid having the tongue out of the mouth.
2. Take your photo with the animal in a natural surrounding (woods, tree stand, etc.). Avoid the "truck bed" photo.
3. Show your bows, arrows, equipment, etc.
4. Use high pixel camera (3 MB or larger) otherwise the picture may be grainy when printed.
5. Take time to document the photo and hunt by including your name, hometown, age, county and the date.
6. Provide details that are important to you. Details make the story interesting to others.

Submit your photos and stories by emailing them to Tammie.E.Thompson@WV.GOV. All ages and successful hunts are welcomed.



Your purchase
of hunting equipment
supports
Wildlife Restoration



Wildlife Resources Section

West Virginia Division of Natural Resources

324 Fourth Avenue
South Charleston, West Virginia 25303

(304) 558-2771
Fax: (304) 558-3147

Cover Photo: Dowain Ford

Inset Photo: Steve Shaluta

It is the policy of the Division of Natural Resources to provide its facilities, services, programs, and employment opportunities to all persons without regard to sex, race, age, religion, national origin or ancestry, disability, or other protected group status.

700 9/11

Please enter appropriate letter for land ownership. U. Personal property (you own the land) P. Privately owned by someone other than you H. Hunt club/hunting lease C. Company land (timber coal, power, etc.) S. State owned land N. National forest land				Land Posted	Land Type	DEER PLEASE RECORD NUMBER SEEN, DEER KILLED, NEW SCRAPES SEEN AND BUCKS CHASING DOES										OTHER WILDLIFE PLEASE RECORD NUMBER SEEN!										Enter number for most common or average weather conditions.	
Month/Day	Hours Hunted	County	Land Ownership			Posted Yes/No	Field, Woods Or Edge	Antlered Bucks Seen		Adult Does Seen	Fawns Seen	Unknown Deer Seen	Deer Killed		New Scrapes Seen	Bucks Chasing Does	Bears Seen	Squirrels Seen	Turkeys Seen	Grouse Seen	Raccoons Seen	Dogs Seen	House Cats Seen	Foxes Seen	Coyotes Seen	Rabbits Seen	Precip
						Spike	Forked				M	F															
EXAMPLE	AM	5	Randolph	P	N	F	0	1	5	0	0	0	0	0	0	0	4	2	3	1	0	1	0	0	0	2	2
	PM	3	Randolph	U	N	W	1	2	3	0	0	0	0	0	1	0	3	0	0	0	1	0	0	0	0	1	1
Saturday October 01	AM																										
	PM																										
Sunday October 02	AM																										
	PM																										
Monday October 03	AM																										
	PM																										
Tuesday October 04	AM																										
	PM																										
Wednesday October 05	AM																										
	PM																										
Thursday October 06	AM																										
	PM																										
Friday October 07	AM																										
	PM																										
Saturday October 08	AM																										
	PM																										
Sunday October 09	AM																										
	PM																										
Monday October 10	AM																										
	PM																										
Tuesday October 11	AM																										
	PM																										
Wednesday October 12	AM																										
	PM																										
Thursday October 13	AM																										
	PM																										
Friday October 14	AM																										
	PM																										
Saturday October 15	AM																										
	PM																										
Sunday October 16	AM																										
	PM																										
Monday October 17	AM																										
	PM																										
Tuesday October 18	AM																										
	PM																										

2011 WEST VIRGINIA BOWHUNTER SURVEY DAILY RECORD

Please enter appropriate letter for land ownership. U. Personal property (you own the land) P. Privately owned by someone other than you H. Hunt club/hunting lease C. Company land (timber coal, power, etc.) S. State owned land N. National forest land				Land Posted	Land Type	DEER PLEASE RECORD NUMBER SEEN, DEER KILLED, NEW SCRAPES SEEN AND BUCKS CHASING DOES										OTHER WILDLIFE PLEASE RECORD NUMBER SEEN!										Enter number for most common or average weather conditions.		
Month/Day	Hours Hunted	County	Land Ownership			Posted Yes/No	Field, Woods Or Edge	Antlered Bucks Seen		Adult Does Seen	Fawns Seen	Unknown Deer Seen	Deer Killed		New Scrapes Seen	Bucks Chasing Does	Bears Seen	Squirrels Seen	Turkeys Seen	Grouse Seen	Raccoons Seen	Dogs Seen	House Cats Seen	Foxes Seen	Coyotes Seen	Rabbits Seen	Precip	Wind
					Spike	Forked		M	F																			
Wednesday October 19	AM																											
	PM																											
Thursday October 20	AM																											
	PM																											
Friday October 21	AM																											
	PM																											
Saturday October 22	AM																											
	PM																											
Sunday October 23	AM																											
	PM																											
Monday October 24	AM																											
	PM																											
Tuesday October 25	AM																											
	PM																											
Wednesday October 26	AM																											
	PM																											
Thursday October 27	AM																											
	PM																											
Friday October 28	AM																											
	PM																											
Saturday October 29	AM																											
	PM																											
Sunday October 30	AM																											
	PM																											
Monday October 31	AM																											
	PM																											
Tuesday November 01	AM																											
	PM																											
Wednesday November 02	AM																											
	PM																											
Thursday November 03	AM																											
	PM																											
Friday November 04	AM																											
	PM																											
Saturday November 05	AM																											
	PM																											

PLEASE RETURN BY DECEMBER 31, 2011

Please enter appropriate letter for land ownership. V. Personal property (you own the land) Q. Privately owned by someone other than you I. Hunt club/hunting lease D. Company land (timber coal, power, etc.) T. State owned land O. National forest land				Land Posted	Land Type	DEER PLEASE RECORD NUMBER SEEN, DEER KILLED, NEW SCRAPES SEEN AND BUCKS CHASING DOES										OTHER WILDLIFE PLEASE RECORD NUMBER SEEN!										Enter number for most common or average weather conditions.	
Month/Day	Hours Hunted	County	Land Ownership			Posted Yes/No	Field, Woods Or Edge	Antlered Bucks Seen		Adult Does Seen	Fawns Seen	Unknown Deer Seen	Deer Killed		New Scrapes Seen	Bucks Chasing Does	Bears Seen	Squirrels Seen	Turkeys Seen	Grouse Seen	Raccoons Seen	Dogs Seen	House Cats Seen	Foxes Seen	Coyotes Seen	Rabbits Seen	Precip
						Spike	Forked				M	F															
EXAMPLE	AM	5	Randolph	P	N	F	0	1	5	0	0	0	0	0	0	0	4	2	3	1	0	1	0	0	0	2	2
	PM	3	Randolph	U	N	W	1	2	3	0	0	0	0	1	0	3	0	0	0	0	1	0	0	0	1	1	
Sunday November 06	AM																										
	PM																										
Monday November 07	AM																										
	PM																										
Tuesday November 08	AM																										
	PM																										
Wednesday November 09	AM																										
	PM																										
Thursday November 10	AM																										
	PM																										
Friday November 11	AM																										
	PM																										
Saturday November 12	AM																										
	PM																										
Sunday November 13	AM																										
	PM																										
Monday November 14	AM																										
	PM																										
Tuesday October 15	AM																										
	PM																										
Wednesday November 16	AM																										
	PM																										
Thursday November 17	AM																										
	PM																										
Friday November 18	AM																										
	PM																										
Saturday November 19	AM																										

**INSTRUCTIONS
2011 BOWHUNTER SURVEY**

1. Post your survey form in a convenient spot such as your refrigerator door, mud room or garage entrance, etc., where you'll see it when you return from hunting.
2. For the appropriate date, enter the **number of hours hunted** in the morning (**am**) or afternoon (**pm**) or both if you hunted both am and pm (see example).
3. List the **county** where you hunted. If you hunted in a different location in the morning and afternoon, record the county you hunted each half of the day (see example).
4. Record the **ownership of the land** where you hunted and whether land was **posted, yes or no**. If you hunted in different locations in the morning and afternoon, record the land ownership and posted vs. Not posted for each half of the day (see example).
5. Enter the dominant **land type** where you hunted. If you hunted in the woods, enter 'w' for woods. If you hunted in a field, enter 'f' for fields. If you hunted along the edge of a field (clearing, opening), enter 'e' for edge.
6. If you saw no animals or birds while hunting, **simply** leave the spaces blank or enter 0.
7. If you observed any of the animals and birds listed, enter the **number of animals or birds seen** under the animals or birds column (see example). Do not record second or third sightings of the same animal or bird on the same hunt as more than one animal or bird sighted; if you see what you feel is the same animal or bird on different hunts, record it for each hunt.
8. For the deer you see, please record the **number of spike and fork antlered bucks, adult does and fawns**. If you are not **completely sure** of a deer's sex, record it as an unknown. If you killed a deer, **record the number of deer killed by sex. (a forked antler deer will have at least two points on one antler.)**
9. At the end of the survey period or if you stop hunting before November 19, return the daily record form by placing the form in the business reply envelope (no postage necessary) or taping the folded forms and attaching a 44 cent stamp where indicated. **IF YOU PLAN TO HUNT DURING THE 2011 FIREARMS SEASON, PLEASE WAIT UNTIL YOU HAVE FINISHED HUNTING FOR THE YEAR BEFORE FILLING OUT AND RETURNING THE QUESTIONNAIRE.**

THANKS FOR YOUR HELP!!

Place Stamp Here

RANDY TUCKER
WV-DNR
PO BOX 67
ELKINS WV 26241

Tape Here

Tape Here

2011 WEST VIRGINIA BOWHUNTER SURVEY

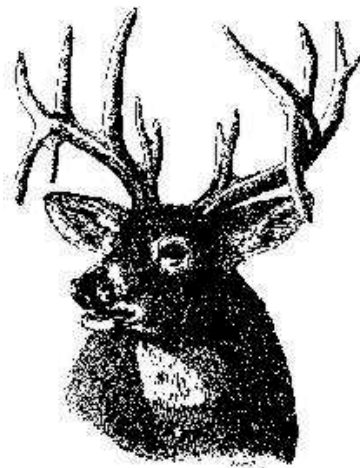
1. How many years have you hunted deer with a bow? _____ years.
2. What is your zip code? _____
3. Do you hunt deer exclusively with a bow? 1. Yes 2. No
4. Is the deer population in the area you hunt most: (circle) 1. Increasing 2. Decreasing or 3. Constant?
List the County _____
5. Compared to last year, were deer racks this year (circle) 1. Smaller 2. Larger 3. About the same?
6. Is the oak mast (acorns) this year in the area you hunt? (circle) 1. Abundant 2. Common 3. Scarce
List County _____
7. Did you participate in the early squirrel season? (circle) 1. Yes 2. No
If yes, Did you take a youth hunting with you? (circle) 1. Yes 2. No
8. Did you participate in any of West Virginia's urban hunts? (circle) 1. Yes 2. No
If yes, how many deer did you kill while hunting in the urban hunts? _____
9. Did you purchase an RB stamp? (circle) 1. Yes 2. No
If yes, circle the number of RB stamps purchased 1 stamp 2 stamps or 3 stamps
10. Did you take a youth bowhunting? (circle) 1. Yes 2. No
11. Would you favor increasing the daily bag limit if you could only kill one buck per day? (circle) 1. Yes 2. No
12. Do you use a trail camera? (circle) 1. Yes 2. No
13. Do you feed/bait deer? (circle) 1. Yes 2. No
If yes, what is your favorite Brand of feed? _____
How much did you spend? \$_____
14. Did you participate in the 2011 DNR's Spring Sectional Meeting? (circle) 1. Yes 2. No
If yes, Did you fill out the questionnaire? (circle) 1. Yes 2. No
15. What is your major source of bowhunting information? (Circle one) 1. TV 2. Magazine 3. Radio 4. Internet
16. Do you have cell phone coverage in the area you hunt? (circle) 1. Yes 2. No
17. Do you hunt for antler sheds? (circle) 1. Yes 2. No
18. Remarks or observations (please include unusual experiences, your opinion on hunting season regulations, weather, etc.) _____

25. List any question(s) that you would like to see on future surveys: _____

26. Please list the name and address of a friend or relative who might want to participate in this survey next year: _____

PLEASE RETURN BY DECEMBER 31, 2011

WANTED



We would like you to submit your hunting story to the Bowhunter Survey Committee. The Bowhunter Survey Committee is planning to implement a new section to the Bowhunter Survey Report. This new section will feature stories and pictures of successful cooperators.

Recommendations for photo stories:

1. Clean up any blood from the animal. Make sure the animal is presentable. Avoid having the tongue out of the mouth.
2. Take your photo with the animal in a natural surrounding (woods, tree stand, etc.). Avoid the "truck bed" photo.
3. Show your bows, arrows, equipment, etc.
4. Use high pixel camera (3 MB or larger) otherwise the picture may be grainy when printed.
5. Take time to document the photo and hunt by including your name, hometown, age, county and the date.
6. Provide details that are important to you. Details make the story interesting to others.

Submit your photos and stories by emailing them to Tammie.E.Thompson@WV.GOV. All ages and successful hunts are welcomed.

THANKS FOR YOUR HELP!!

Place Stamp Here

RANDY TUCKER
WV-DNR
PO BOX 67
ELKINS WV 26241

Tape Here

Tape Here