

Description: Stonewall Jackson Lake Wildlife Management Area, located just off I-79 in Lewis County, consists of an impressive 18,289 acres, including the 2,650-acre Stonewall Jackson Lake. The upland habitats consist of mixed hardwoods with brushy edges and several hundred acres of maintained clearings on rolling hills. This terrain attracts white-tailed deer, wild turkeys, rabbits and squirrels. Class Q hunting access is provided. Stonewall Jackson Lake provides habitat for some waterfowl, including Canada geese, wood ducks and mallards. Careful observers might also see river otters, muskrat, beavers and mink in and around the lake.

Largemouth bass, bluegill, carp, channel catfish, crappie, muskellunge, and walleye live in the lake, the second largest in West Virginia. The lake is noted for its outstanding black bass fishery, which is currently under a catch-and-release regulation, and its musky fishery. DNR personnel stock the tail waters with trout once in February, and every two weeks from March through May. The lake has four boat ramps and one carry-down access. Physically challenged anglers who wish to fish in the tailwaters can use a pier maintained by the U.S. Army Corps of Engineers, while those who want to fish in the lake can use a pier at the marina in the state park.

Viewing information: Visitors to Stonewall Jackson Lake WMA can observe numerous species of birds year-round. Among them are: great blue heron; downy, hairy and pileated woodpeckers; Eastern bluebird; common raven; cedar waxwing; Carolina chickadee; red-winged blackbird; Eastern meadowlark; and American goldfinch. Birds of prey seen on the area include the osprey, red-shouldered hawk and bald eagle. Summer residents and fall and spring migrants include the yellow-billed cuckoo, Eastern wood-pewee,



The expansive lake is a popular destination for anglers.

WV Dept. of Commerce/Steve Shaluta

Eastern kingbird, white-eyed and red-eyed vireo, tree swallow, cliff swallow, barn swallow, blue-gray gnatcatcher, wood thrush, common yellowthroat, ovenbird, Louisiana waterthrush, cerulean warbler, blue-winged warbler, Kentucky warbler, hooded warbler, American redstart, prairie warbler, field sparrow, scarlet tanager and indigo bunting.

The fields provide habitat for a variety of butterflies including the monarch, pearl crescent, meadow fritillary, great-spangled fritillary, eastern tailed-blue, spring and summer azure, various skippers and others. Swamp darner, black-shouldered spinyleg, common blue darner, blue-tipped dancer, ashy clubtail, dragonhunter, and wandering glider are some of the dragonflies that might be seen around Stonewall Jackson Lake.

Nine species of common salamanders such as the spotted, slimy, Northern spring, and marbled live on the area. Knowledgeable observers might see the uncommon green salamander. Among toads and frogs, a searcher could find the Eastern American toad, Fowler's toad, spring peepers, gray treefrogs, mountain chorus frog, bullfrog, green frogs, and pickerel frogs.

Turtles of the area include common snapping, box, map, stinkpot, and eastern spiny softshell. Lizard lookers might see Northern fence lizards and five-lined skinks. Visitors interested in snakes should look along the lake shoreline for the queen snake and Northern water snake. Snakes more likely to be seen on land include the Eastern garter, Eastern hognose, Northern ringneck, Northern black racer, black rat, Eastern milk, Northern copperhead, and timber rattlesnake.

Directions: The WMA can be accessed several ways. From I-79, take exit 96, turn onto state Rt. 30 south. This takes you right past the dam turnoff. You can also take exit 91 off I-79, turn south on U.S. Rt. 19, past the State Park turnoff and either stay on Rt. 19 or turn onto state Rt. 44. If you're traveling from the east on U.S. Rt. 33 from Buckhannon, you can take state Rt. 15 (Georgetown Rd.) past Stonecoal Lake to reach the eastern part of the WMA.

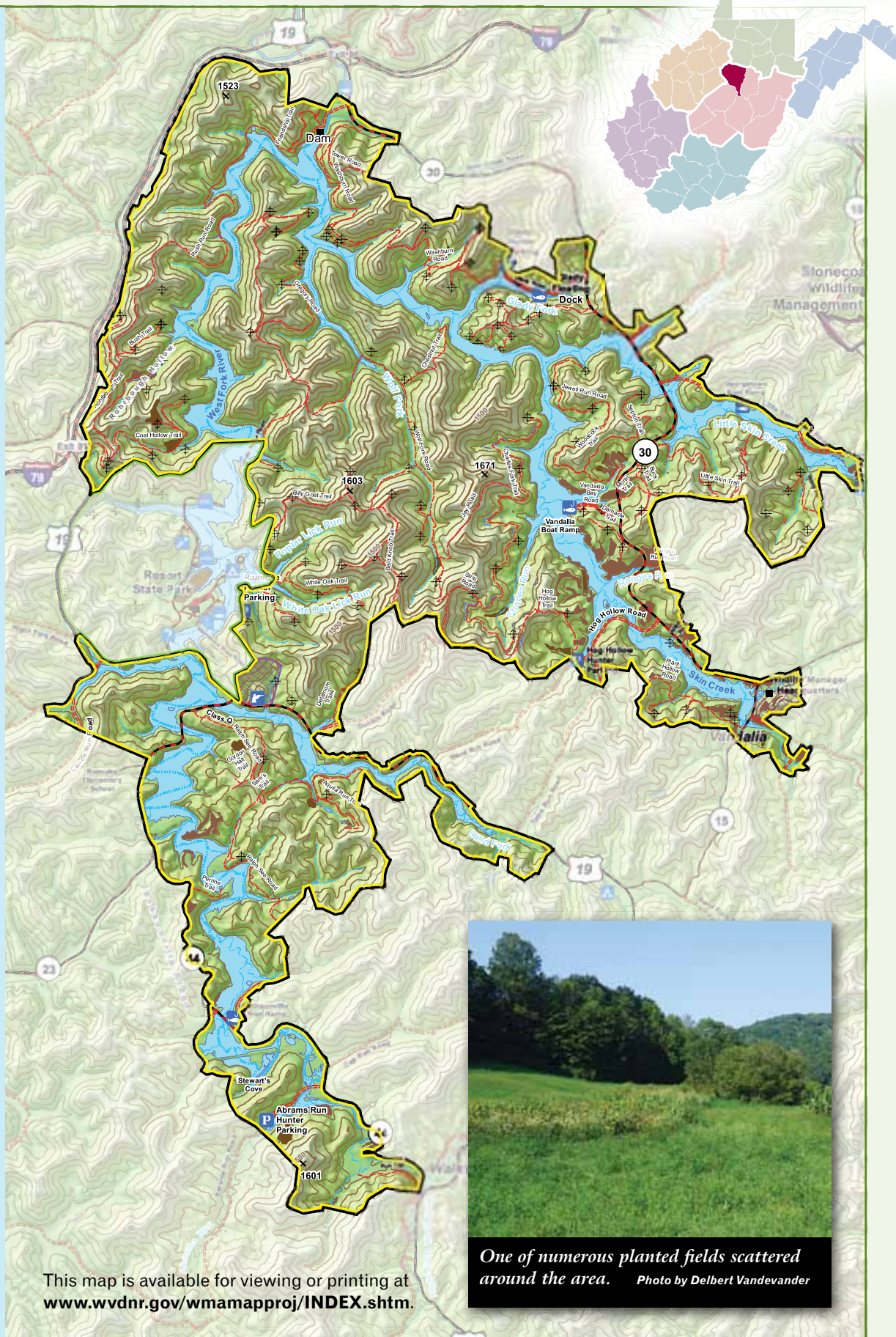
Note: Stonewall Jackson Lake WMA is a public hunting area. Please check the current West Virginia Hunting and Trapping regulations or call the DNR office listed below for hunting season dates.

Camping: Camping is not permitted on the WMA, but the adjacent Stonewall Resort, located on a state park, has 40 RV campsites. Call 304-269-8889 for more information.

Shooting: A 300-yard rifle range with 10 covered shooting benches is located on U.S. Rt. 19 south of the state park entrance.

Ownership: US Army Corps of Engineers (304-765-2816 or 304-765-2705) manages the dam and water level in the lake; West Virginia Division of Natural Resources (304-924-6211) manages the WMA.

Contacts: Marina: 304-269-8895; Lake Conditions: 304-269-7463; Resource Manager: 304-269-4588.



This map is available for viewing or printing at www.wvdnr.gov/wmamapproj/INDEX.shtm.

One of numerous planted fields scattered around the area. Photo by Delbert Vandevander