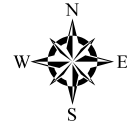
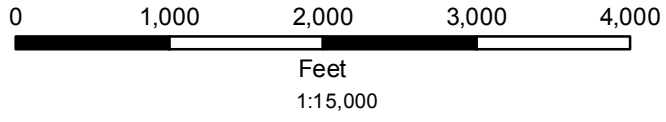


# Tate Lohr Wildlife Management Area

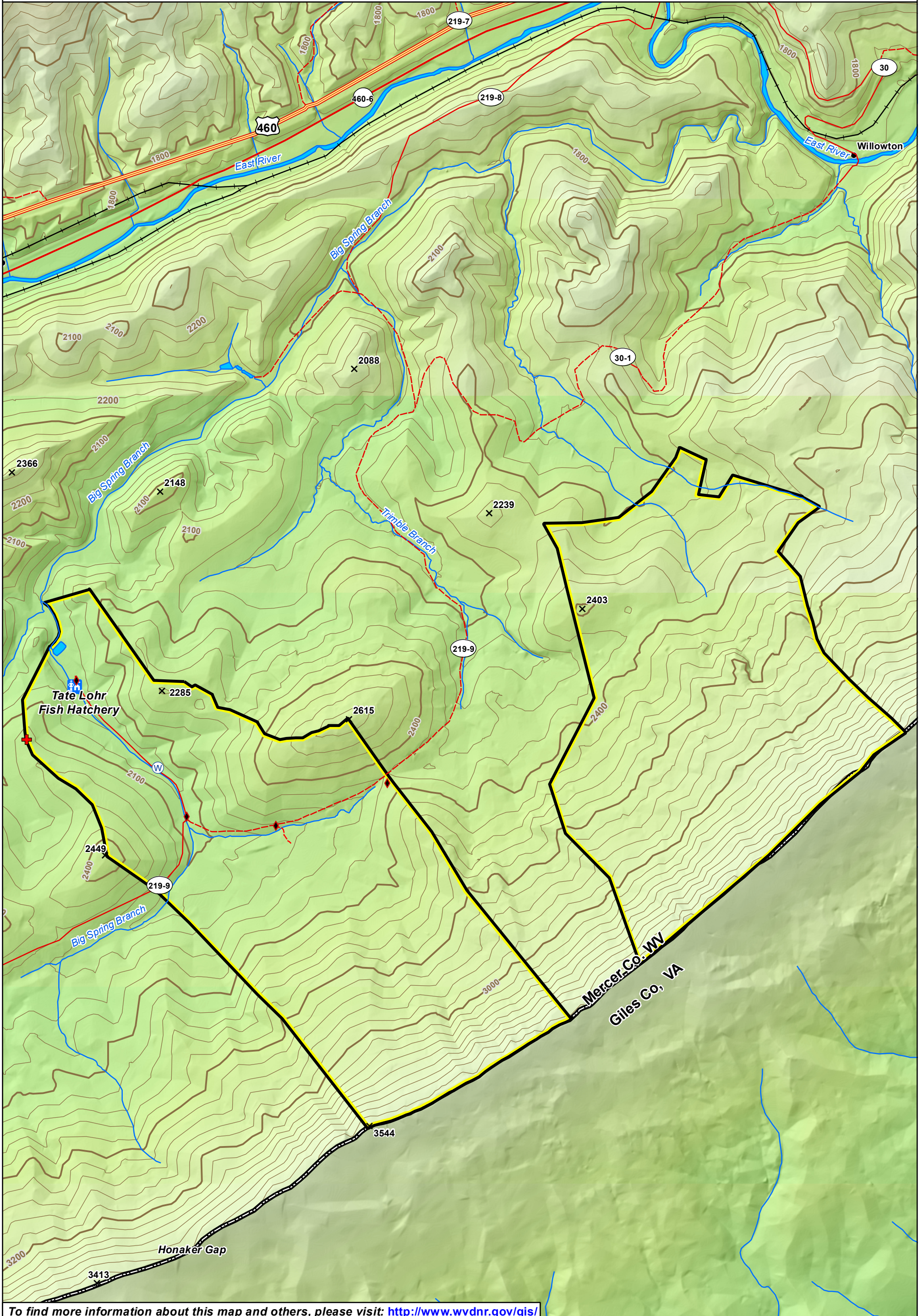
Mercer County, West Virginia

Contour Interval 40 Feet  
Bold Line at Even 200 Feet  
Boundaries are Approximate

- ◆ Gate
- ✚ Cemetery
- Ⓜ Spring
- 🏠 Office
- 🐾 Wildlife Clearing
- 📐 WMA Property Boundary



Prepared by  
WV Division of Natural Resources  
Wildlife Resources Section, GIS  
Elkins, WV 26241  
January 15, 2019



To find more information about this map and others, please visit: <http://www.wvdnr.gov/gis/>