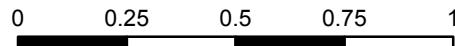


# Ritchie Mines Wildlife Management Area

Ritchie County, West Virginia



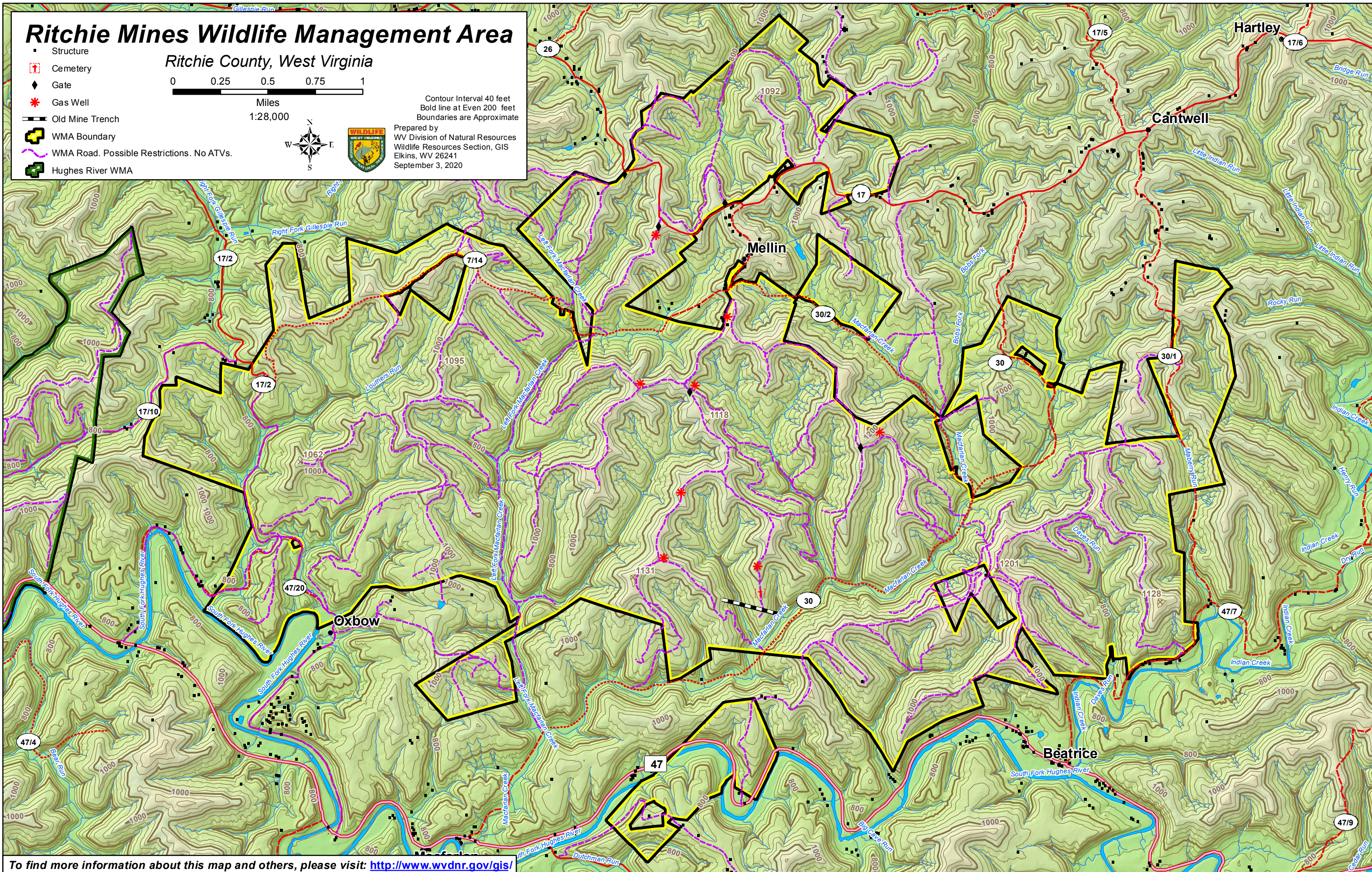
Miles  
1:28,000



Contour Interval 40 feet  
Bold line at Even 200 feet  
Boundaries are Approximate

Prepared by  
WV Division of Natural Resources  
Wildlife Resources Section, GIS  
Elkins, WV 26241  
September 3, 2020

- Structure
- Cemetery
- Gate
- Gas Well
- Old Mine Trench
- WMA Boundary
- WMA Road. Possible Restrictions. No ATVs.
- Hughes River WMA



To find more information about this map and others, please visit: <http://www.wvdnr.gov/gis/>