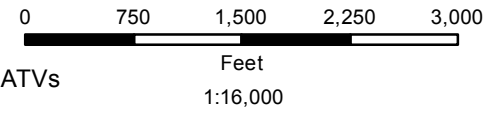


Lynn Camp Wildlife Management Area

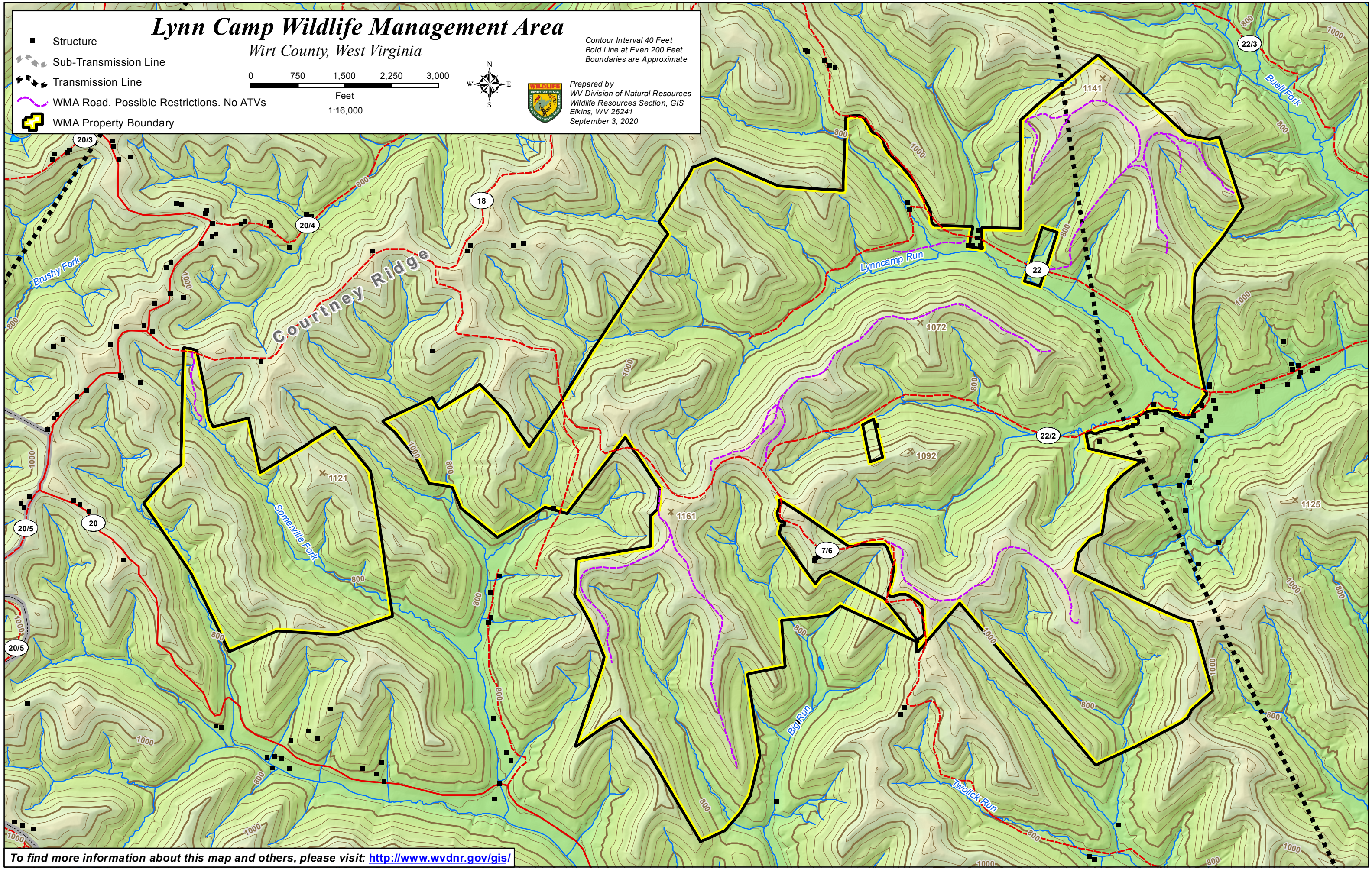
Wirt County, West Virginia

Contour Interval 40 Feet
Bold Line at Even 200 Feet
Boundaries are Approximate

- Structure
- - - Sub-Transmission Line
- - - Transmission Line
- ~ WMA Road. Possible Restrictions. No ATVs
- ⊕ WMA Property Boundary



Prepared by
WV Division of Natural Resources
Wildlife Resources Section, GIS
Elkins, WV 26241
September 3, 2020



To find more information about this map and others, please visit: <http://www.wvdnr.gov/gis/>